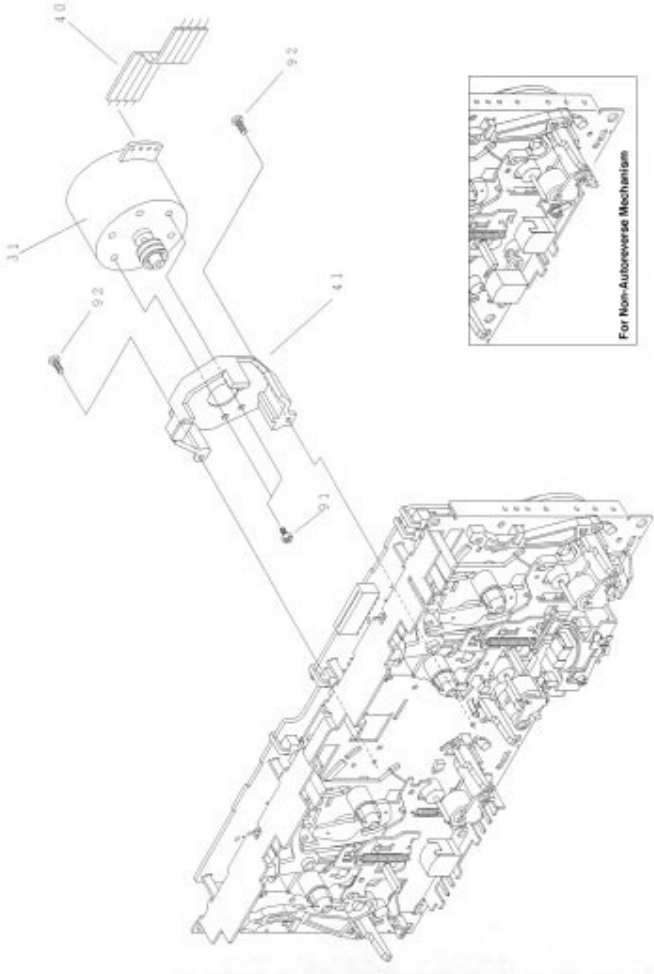


3139 118 77100 (incl. ...771000) del. w/0208

TAPE MODULE EXPLODED VIEW

- | | | |
|---|----------------|--|
| 1 | 3139 118 77130 | Autoreverse Mech. CWE44FR01 |
| 1 | 3139 118 77140 | Non-Autoreverse Mech. CWE44FF02 Chrome/Ferro |
| 1 | 3139 118 77950 | Non-Autoreverse Mech. CWE44FF05 Ferro |
| 3 | - | Screw D3 x 10 |
| 6 | - | Screw M2 x 16 |
| 7 | 3139 110 34080 | Flex Cable 14 pin 7.5 cm |

Note: Only the parts mentioned in this list are normal service spare parts.



TAPE MECHANISM - MOTOR EXPLODED VIEW

- | | | |
|----|----------------|----------------|
| 31 | 4822 361 11055 | Motor Assembly |
| 91 | - | Screw M2,6 x 5 |
| 92 | - | Screw M2 x 5 |

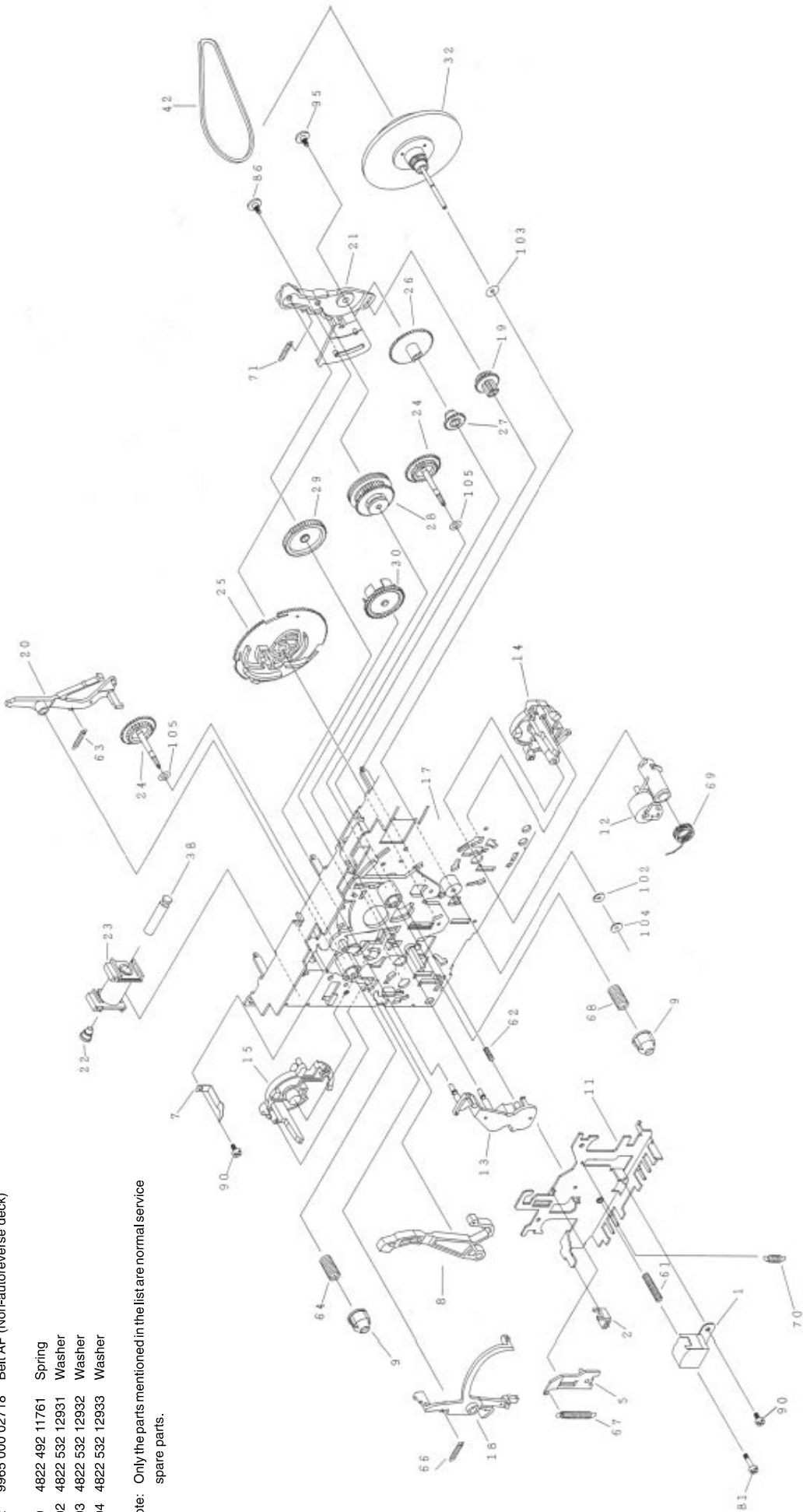
Note: Only the parts mentioned in this list are normal service spare parts.

TAPE MECHANISM A - PLAY

MECHANICAL PARTS - PLAY MECHANISM

1	9965 000 02313	Play Head (Non-Autoreverse deck)
1	9965 000 02321	Play Head (Autoreverse deck)
12	4822 402 10972	Pinch Arm Assembly R
23	9965 000 02314	Coil Assembly
25	9965 000 06443	Cam Gear
32	4822 528 11209	Flywheel Assembly RV
42	9965 000 02315	Belt AF (Autoreverse deck)
42	9965 000 02718	Belt AF (Non-autoreverse deck)
69	4822 492 11761	Spring
102	4822 532 12931	Washer
103	4822 532 12932	Washer
104	4822 532 12933	Washer

Note: Only the parts mentioned in the list are normal service spare parts.

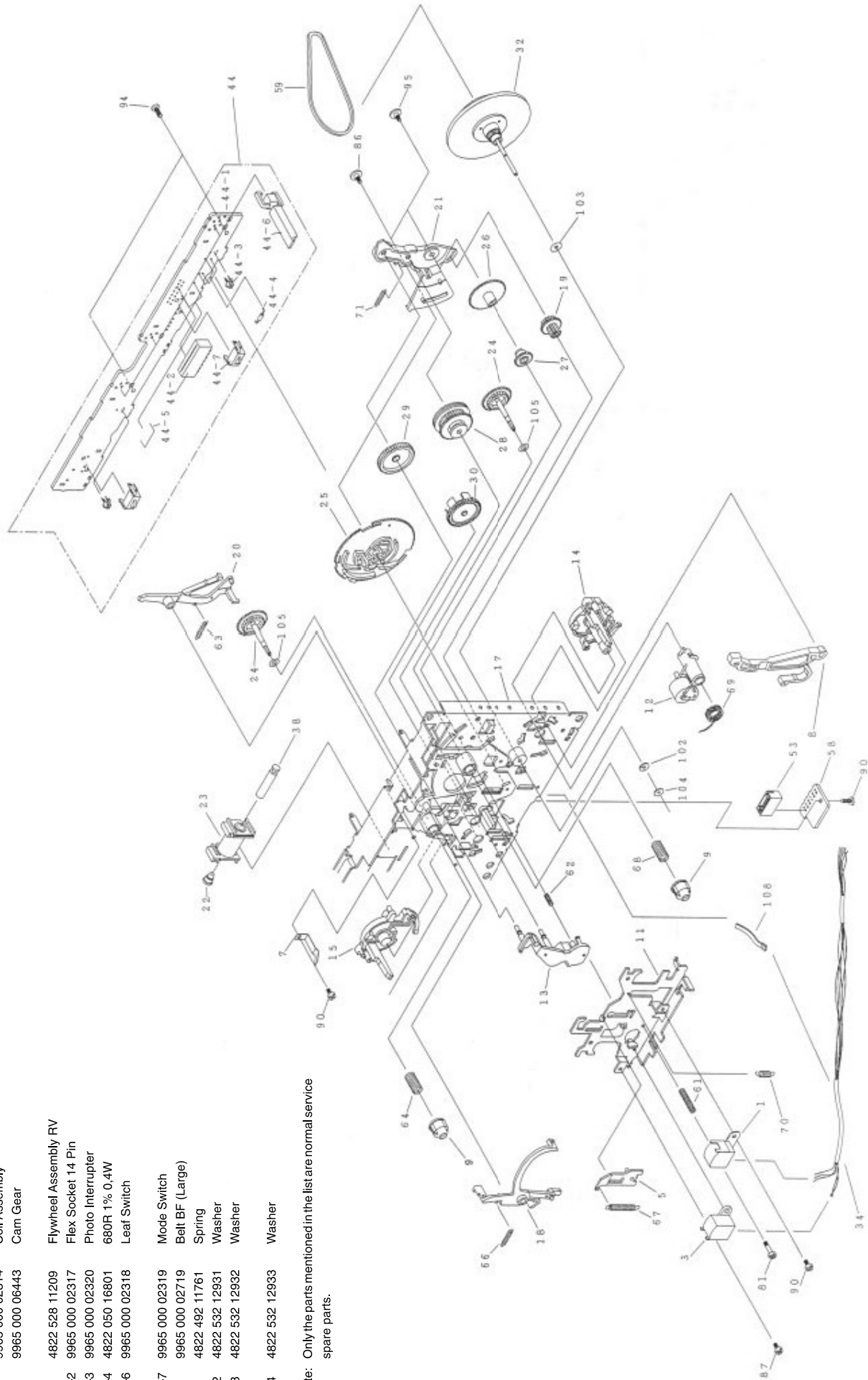


TAPE MECHANISM B - RECORD/PLAYBACK (Non-Autoreverse version)

MECHANICAL PARTS - REC/PB MECHANISM

1	9965 000 02313	Play Head
3	9965 000 02600	Head, Erase
12	4822 402 10972	Pinch Arm Assembly R
23	9965 000 02314	Coil Assembly
25	9965 000 06443	Cam Gear
32	4822 528 11209	Flywheel Assembly RV
44-2	9965 000 02317	Flex Socket 14 Pin
44-3	9965 000 02320	Photo Interrupter
44-4	4822 050 16801	680R 1% 0.4W
44-6	9965 000 02318	Leaf Switch
44-7	9965 000 02319	Mode Switch
59	9965 000 02719	Belt BF (Large)
69	4822 492 11761	Spring
102	4822 532 12931	Washer
103	4822 532 12932	Washer
104	4822 532 12933	Washer

Note: Only the parts mentioned in the list are normal service spare parts.

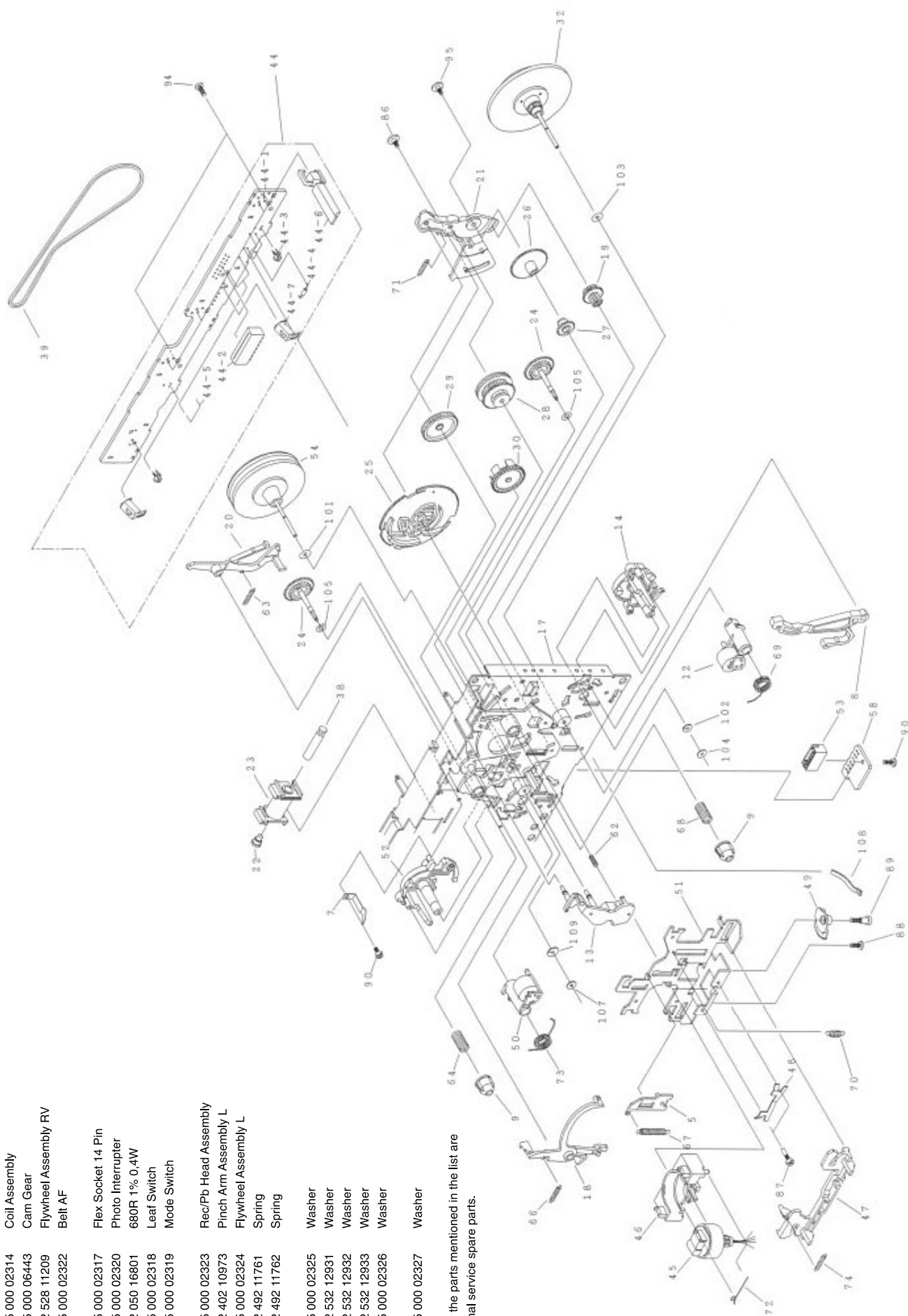


TAPE MECHANISM B - RECORD/PLAYBACK (Autoreverse version)

MECHANICAL PARTS - REC/PB MECHANISM

12	4822 402 10972	Pinch Arm Assembly R
23	9965 000 02314	Coil Assembly
25	9965 000 06443	Cam Gear
32	4822 528 11209	Flywheel Assembly RV
39	9965 000 02322	Belt AF
44-2	9965 000 02317	Flex Socket 14 Pin
44-3	9965 000 02320	Photo Interrupter
44-4	4822 050 16801	680R 1% 0.4W
44-6	9965 000 02318	Leaf Switch
44-7	9965 000 02319	Mode Switch
45	9965 000 02323	Rec/Pb Head Assembly
50	4822 402 10973	Pinch Arm Assembly L
54	9965 000 02324	Flywheel Assembly L
69	4822 492 11761	Spring
73	4822 492 11762	Spring
101	9965 000 02325	Washer
102	4822 532 12931	Washer
103	4822 532 12932	Washer
104	4822 532 12933	Washer
107	9965 000 02326	Washer
109	9965 000 02327	Washer

Note: Only the parts mentioned in the list are normal service spare parts.



ELECTRICAL PARTS LIST - ETF7 NON-DOLBY BOARD

MISCELLANEOUS	
1701 482226710953	Flex Socket 7pin Vert.
1706 482226710953	Flex Socket 7pin Vert.
1770 482226751255	Flex Socket 14pin Vert.
CAPACITORS	
2621 532212231647	1nF 10% 63V
2622 532212234099	470pF 10% 63V
2623 532212234099	470pF 10% 63V
2624 482212614585	100nF 10% 50V only for Ferro
2625 482212614585	100nF 10% 50V
2701 532212233538	150pF 2% 63V Autoreverse
2701 482212233216	150pF 5% 63V Non-autoreverse
2702 532212233538	150pF 2% 63V Autoreverse
2702 482212233216	270pF 5% 63V Non-autoreverse
2703 532212232531	100pF 5% 50V Autoreverse
2703 482212233575	220pF 5% 63V Non-autoreverse
2704 532212232531	100pF 5% 50V Autoreverse
2704 482212233575	220pF 5% 63V Non-autoreverse
2705 482212233575	220pF 5% 63V
2706 482212233575	220pF 5% 63V
2707 532212234099	470pF 10% 63V
2708 532212234099	470pF 10% 63V
2709 532212231863	330pF 5% 63V
2710 532212231863	330pF 5% 63V
2711 532212232531	100pF 5% 50V
2712 532212232531	100pF 5% 50V
2713 482212440248	10uF 20% 63V
2714 482212440248	10uF 20% 63V
2715 482212480195	470uF 20% 10V
2716 482212480195	470uF 20% 10V
2717 482212233177	10nF 20% 50V Autoreverse
2717 482212613188	15nF 5% 63V Non-autoreverse
2718 482212233177	10nF 20% 50V Autoreverse
2718 482212613188	15nF 5% 63V Non-autoreverse
2719 482212612105	33nF 5% 50V
2720 482212612105	33nF 5% 50V
2721 532212231866	6.8nF 10% 63V not for Ferro
2722 532212231866	6.8nF 10% 63V not for Ferro
2723 482212613188	15nF 5% 63V
2724 482212613188	15nF 5% 63V
2725 532212610223	4.7nF 10% 63V
2726 532212610223	4.7nF 10% 63V
2727 532212234099	470pF 10% 63V Autoreverse
2727 532212231647	1nF 10% 63V Non-autoreverse
2728 532212234099	470pF 10% 63V Autoreverse
2728 532212231647	1nF 10% 63V Non-autoreverse
2729 532212232654	22nF 10% 63V
2730 532212232654	22nF 10% 63V
2733 532212234099	470pF 10% 63V
2734 532212234099	470pF 10% 63V
2735 482212614585	100nF 10% 50V
2737 482212614585	100nF 10% 50V

ELECTRICAL PARTS LIST - ETF7 NON-DOLBY BOARD

3685 482211652234	100k 5% 0.5W	3745 482205120332	3kK 5% 0.1W	Autoreverse
3686 482211710837	100k 1% 0.1W	3745 482205120562	5k6 5% 0.1W	Non-autoreverse
3687 482211711503	220R 1% 0.1W not for Ferro	3746 482205120332	3kK 5% 0.1W	Autoreverse
3688 482211710361	680R 1% 0.1W Autoreverse	3746 482205120562	5k6 5% 0.1W	Non-autoreverse
3701 482211711503	220R 1% 0.1W	3748 482211711449	2k2 1% 0.1W	
3702 482211711503	220R 1% 0.1W	3749 482211710834	47k 1% 0.1W	
3703 482211711503	220R 1% 0.1W	3751 482211710833	10k 1% 0.1W	
3704 482211711503	220R 1% 0.1W	3752 482211710837	100k 1% 0.1W	
3705 482211711503	220R 1% 0.1W	3753 482211710837	100k 1% 0.1W	
3706 482211711503	220R 1% 0.1W	3754 482205120105	1M 5% 0.1W	Autoreverse
3707 482205120101	100R 5% 0.1W	3754 482205120479	47R 5% 0.1W	Non-autoreverse
3708 482205120101	100R 5% 0.1W	3755 482205120105	1M 5% 0.1W	Autoreverse
3709 482205120109	10R 5% 0.1W	3755 482205120479	47R 5% 0.1W	Non-autoreverse
3710 482205120109	10R 5% 0.1W	3756 482211713579	220k 1% 0.1W	
3711 482205120154	150k 5% 0.1W	3757 482211713579	220k 1% 0.1W	
3712 482205120154	150k 5% 0.1W	3758 482211710833	10k 1% 0.1W	
3713 482205120109	10R 5% 0.1W	3759 482211710833	10k 1% 0.1W	
3714 482205120109	10R 5% 0.1W	3760 482205120121	120R 5% 0.1W	
3715 482205120182	1k8 5% 0.1W	3761 482205021003	10k 1% 0.6W	
3716 482205120182	1k8 5% 0.1W	3762 482211711454	820R 1% 0.1W	
3717 482211711449	2k2 1% 0.1W	3763 482205120154	150k 5% 0.1W	
3718 482211711449	2k2 1% 0.1W	3764 482211683872	220R 5% 0.5W	
3719 482211711383	12k 1% 0.1W	3765 482205120393	39k 5% 0.1W	
3720 482211711383	12k 1% 0.1W	3766 482205120475	4M7 5% 0.1W	
3721 482205120392	3k9 5% 0.1W	3767 482205120475	4M7 5% 0.1W	
3722 482205120392	3k9 5% 0.1W	3768 482211710833	10k 1% 0.1W	
3723 482211683933	15k 1% 0.1W Autoreverse	3769 482211711383	12k 1% 0.1W	Autoreverse
3723 482211710965	18k 1% 0.1W Non-autoreverse	3769 482205120822	8k2 5% 0.1W	Non-autoreverse
3724 482211683933	15k 1% 0.1W Autoreverse	3770 482211711139	1k5 1% 0.1W	
3724 482211710965	18k 1% 0.1W Non-autoreverse	3771 482205120122	1k2 5% 0.1W	
3725 482205120109	10R 5% 0.1W not for Ferro	3772 482211711507	6k8 1% 0.1W	Autoreverse
3726 482205120109	10R 5% 0.1W not for Ferro	3772 482205120562	5k6 5% 0.1W	Non-autoreverse
3727 482205120562	5k6 5% 0.1W Autoreverse	3773 482210012227	Trimmer 4k7 30% 0.1W	
3727 482211711507	6k8 1% 0.1W Non-autoreverse	3774 482211683933	15k 1% 0.1W	Autoreverse
3728 482205120562	5k6 5% 0.1W Autoreverse	3774 482205120822	8k2 5% 0.1W	Non-autoreverse
3728 482211711507	6k8 1% 0.1W Non-autoreverse	3775 482205120478	4R7 5% 0.1W	
3729 482205120332	3k3 5% 0.1W Autoreverse	3776 482211711507	6k8 1% 0.1W	
3729 482205120472	4k7 5% 0.1W Non-autoreverse	3777 482211710353	150R 1% 0.1W	
3730 482205120332	3k3 5% 0.1W Autoreverse	3778 482205210688	Δ 6R8 5% 0.33W	
3730 482205120472	4k7 5% 0.1W Non-autoreverse	3779 482205120334	330k 5% 0.1W	
3731 482205120822	8k2 5% 0.1W	3780 482205120105	1M 5% 0.1W	
3732 482205120822	8k2 5% 0.1W	3781 482205120475	4M7 5% 0.1W	
3733 482205120122	1k2 5% 0.1W	3784 482205110102	1k 2% 0.25W	
3734 482205120122	1k2 5% 0.1W	3786 482205120223	22k 5% 0.1W	
3735 482205120223	22k 5% 0.1W	3787 482205120105	1M 5% 0.1W	
3736 482205120223	22k 5% 0.1W	3788 482205120105	1M 5% 0.1W	
3741 482211711449	2k2 1% 0.1W	3789 482211710834	47k 1% 0.1W	
3742 482211711449	2k2 1% 0.1W	4701 482205120008	0R Jumper 0805	
3743 482211711139	1k5 1% 0.1W Autoreverse	4702 482205120008	0R Jumper 0805	
3743 482211711449	2k2 1% 0.1W Non-autoreverse	4703 482205120008	0R Jumper 0805	
3744 482211711139	1k5 1% 0.1W Autoreverse	4704 482205120008	0R Jumper 0805	
3744 482211711449	2k2 1% 0.1W Non-autoreverse	4705 482205120008	0R Jumper 0805	

ELECTRICAL PARTS LIST - E177 NON-DOLBY BOARD

RESISTORS			
4706	482205120008	OR Jumper 0805	
4707	482205120008	OR Jumper 0805	
4708	482205120008	OR Jumper 0805	Autoreverse
4709	482205120008	OR Jumper 0805	
4710	482205120008	OR Jumper 0805	
4711	482205120008	OR Jumper 0805	
4712	482205120008	OR Jumper 0805	
4713	482205120008	OR Jumper 0805	
4714	482205120008	OR Jumper 0805	
4715	482205120008	OR Jumper 0805	BZX79-F8V2
4716	482205120008	OR Jumper 0805	
4717	482205120008	OR Jumper 0805	
4718	482205120008	OR Jumper 0805	
4719	482205120008	OR Jumper 0805	
4720	482205120008	OR Jumper 0805	
4721	482205120008	OR Jumper 0805	
4722	482205120008	OR Jumper 0805	HEF4094BT
4723	482205120008	OR Jumper 0805	PMBT2907
4724	482205120008	OR Jumper 0805	PMBT2907
4725	482205120008	OR Jumper 0805	PMBT2907
4726	482205120008	OR Jumper 0805	Autoreverse
4727	482205120008	OR Jumper 0805	
4728	482205120008	OR Jumper 0805	
4729	482205120008	OR Jumper 0805	
4730	482205120008	OR Jumper 0805	Autoreverse
4731	482205120008	OR Jumper 0805	
4732	482205120008	OR Jumper 0805	
4733	482205120008	OR Jumper 0805	HEF4952BT
4734	482205120008	OR Jumper 0805	AN7323S
4735	482205120008	OR Jumper 0805	HEF4952BT
4736	482205120008	OR Jumper 0805	HEF4952BT
4737	482205120008	OR Jumper 0805	BC847B
4738	482205120008	OR Jumper 0805	BC817-25
4739	482205120008	OR Jumper 0805	BC557B
4740	482205120008	OR Jumper 0805	BC847B
4741	482205120008	OR Jumper 0805	BC857B
4742	482205120008	OR Jumper 0805	J111
4744	482205120008	OR Jumper 0805	BC847B
4745	482205120008	OR Jumper 0805	BC847B
4746	482205120008	OR Jumper 0805	BC847B
4748	482205120008	OR Jumper 0805	
4785	482205120008	OR Jumper 0805 only for Ferro	Note: Only the parts mentioned in this list are normal service spare parts.
4790	482205120008	OR Jumper 0805	
4794	482205120008	OR Jumper 0805	
4795	482205120008	OR Jumper 0805	

COILS & FILTERS

5701	482215711477	Coil 2.2uH 5%
5703	482215620946	Osc Coil 100kHz

DIODES

6611	482213031878	1N4003G
------	--------------	---------



3CDC-LC-MP3CD2002

(3 Disc Carousel Changer+MP3 Board) Layout stage .2

TABLE OF CONTENTS

Service Hints	10-2
Wiring Diagram	10-4
Blockdiagram	10-5

CD PART

Component Layout Main Board	10-6
Circuit Diagram	10-7

MP3 PART

Component Layout Main Board	10-8
Circuit Diagram	10-9

Exploded View	10-10
Partslist	10-12



Service hints

CAUTION

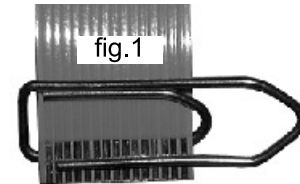
CHARGED CAPACITORS ON THE SERVO BOARD MAY DAMAGE THE CD DRIVE ELECTRONICS WHEN CONNECTING A NEW CD MECHANISM. THAT'S WHY, BESIDES THE SAFETY MEASURES LIKE

- **SWITCH OFF POWER SUPPLY**
- **ESD PROTECTION**

ADDITIONAL ACTIONS MUST BE TAKEN BY THE REPAIR TECHNICIAN.

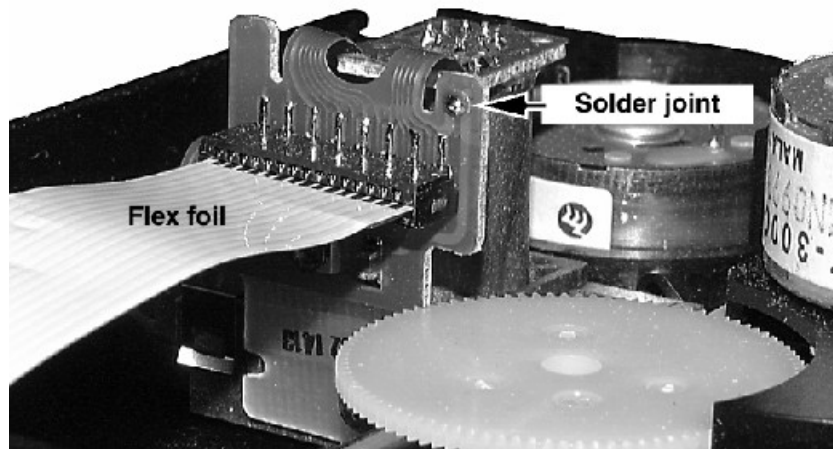
The following steps have to be done when replacing the CD mechanism:

1. Disconnect flexfoil cable from the old CD drive
2. Put a paperclip on the flexfoil to short-circuit the contacts (fig.1)
3. Remove the old CD drive
4. Remove paperclip from the flexfoil and connect it to the new drive
5. Position the new CD drive in its studs
6. Remove solder joint from the Laserunit



Attention: The laser diode of this CD drive is protected against ESD by a solder joint which shortcircuits the laserdiode to ground.

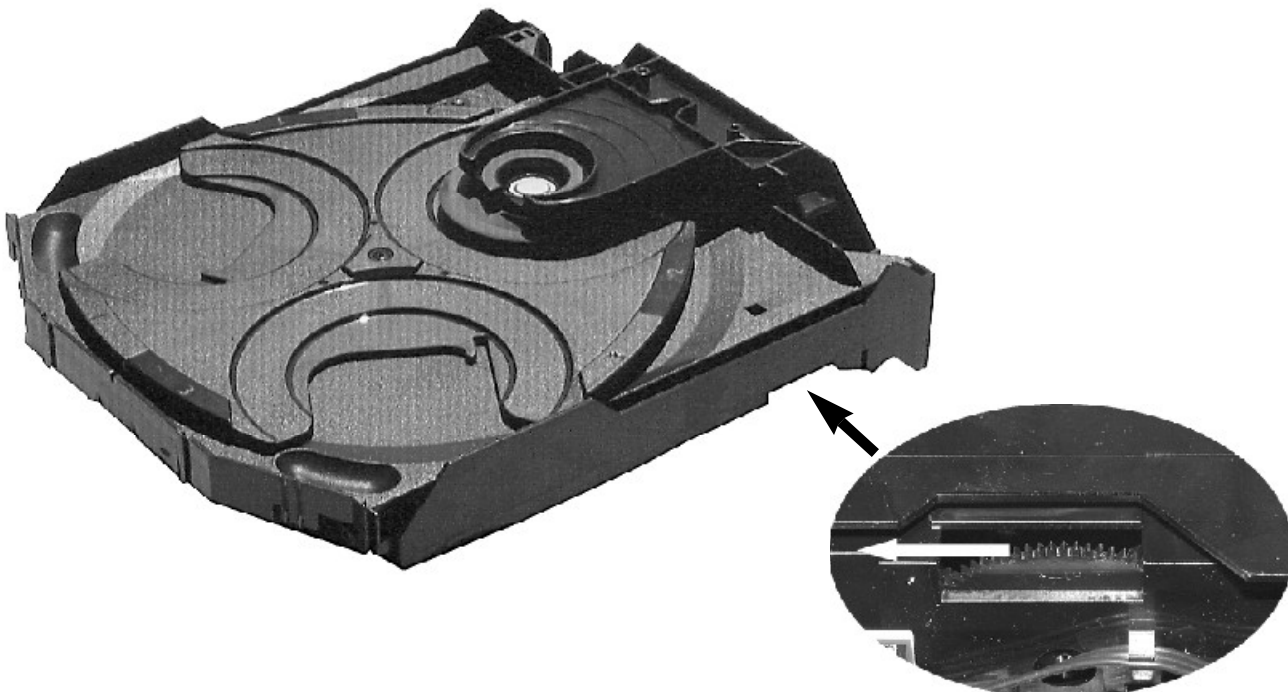
For proper functionality of the CD drive this solder joint must be removed **after** connection the drive to the set.



Emergency open

In case of a Supply fault, the tray can be opened manually.

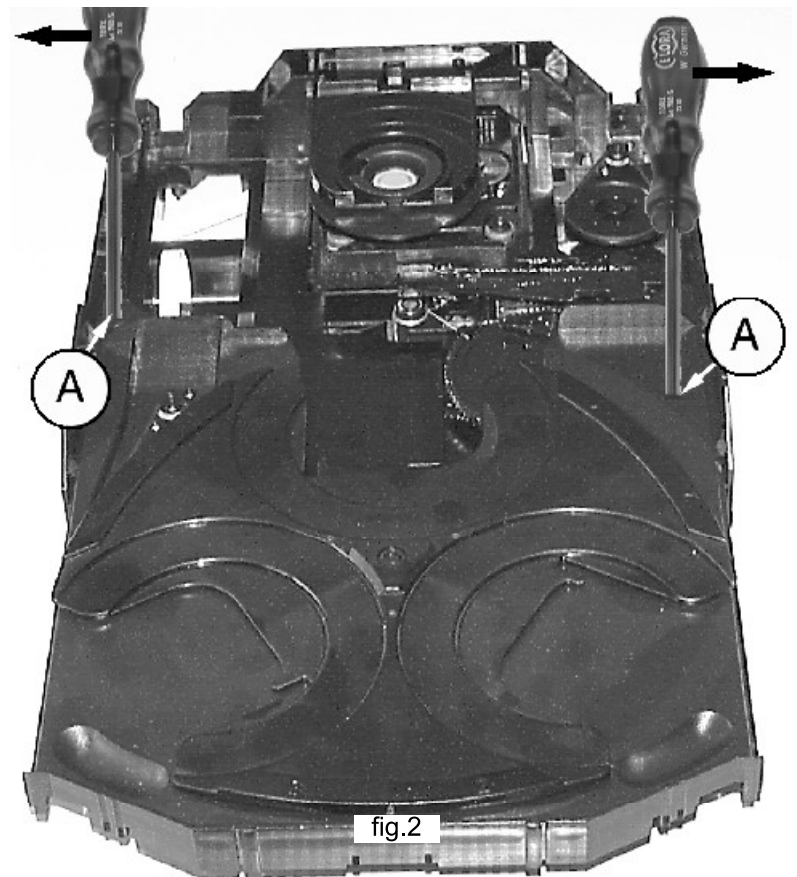
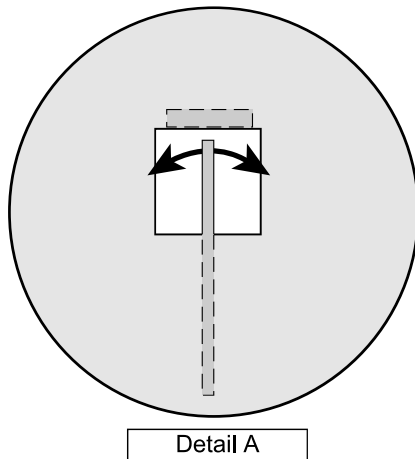
1. Remove the top cover of the set to get access to the Changer Module.
2. Turn gearwheel clockwise (as shown in picture below).



Service hints

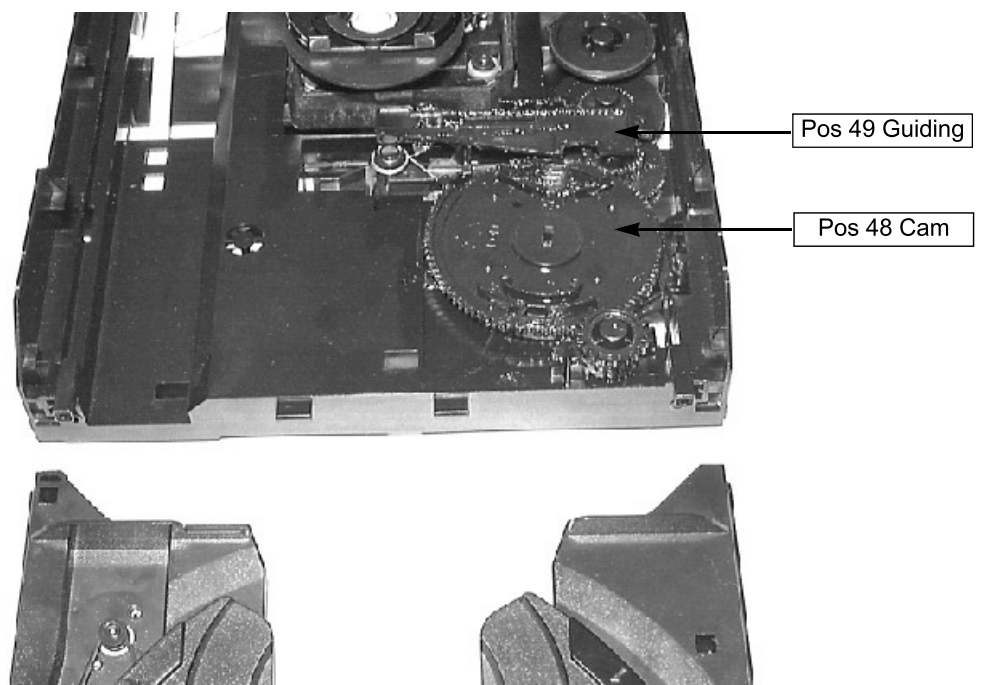
Dismantling of Tray

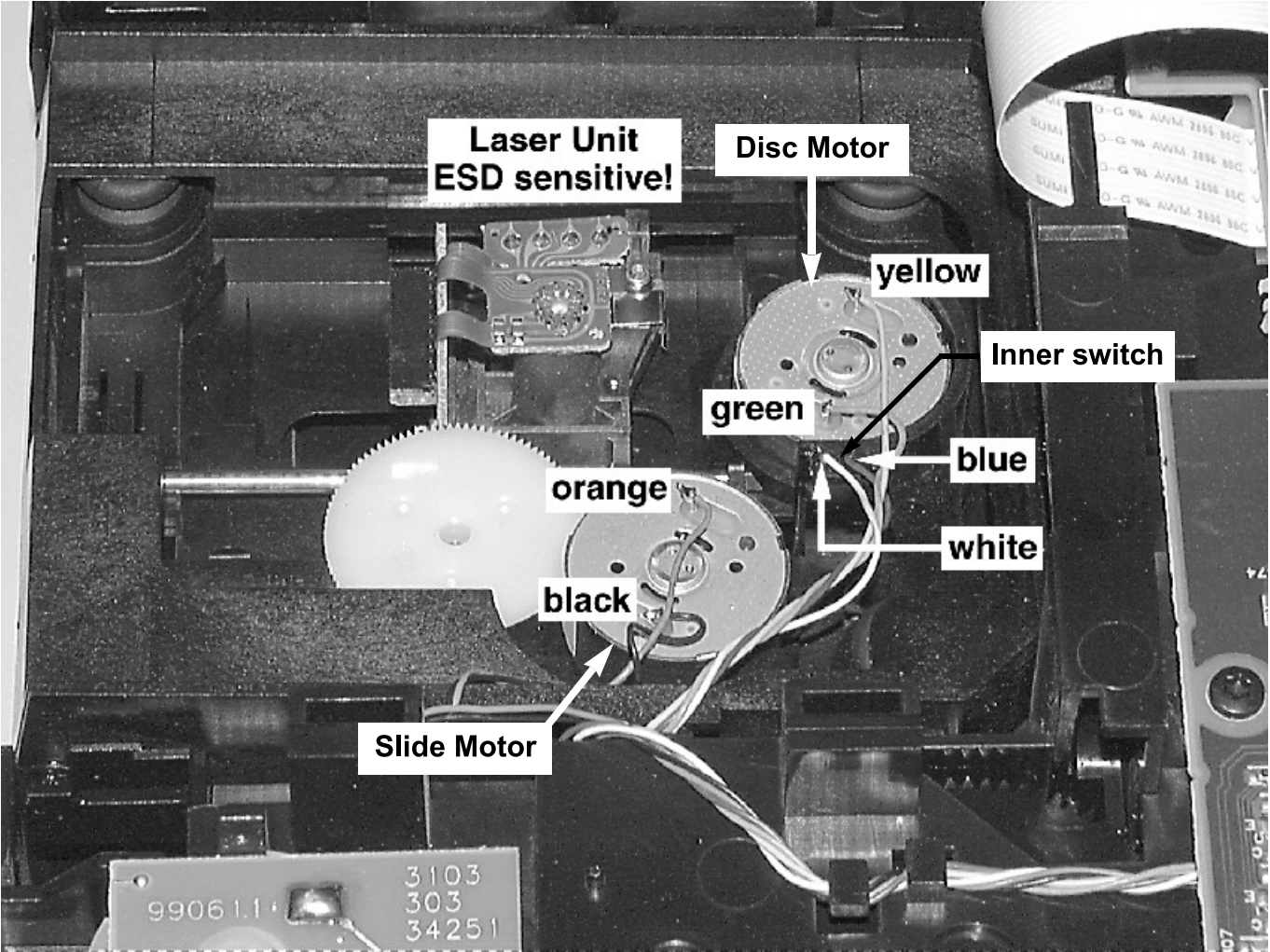
1. Open the tray.
2. Release 2x catch as shown in fig. 2 and Detail A
3. Pull tray out.



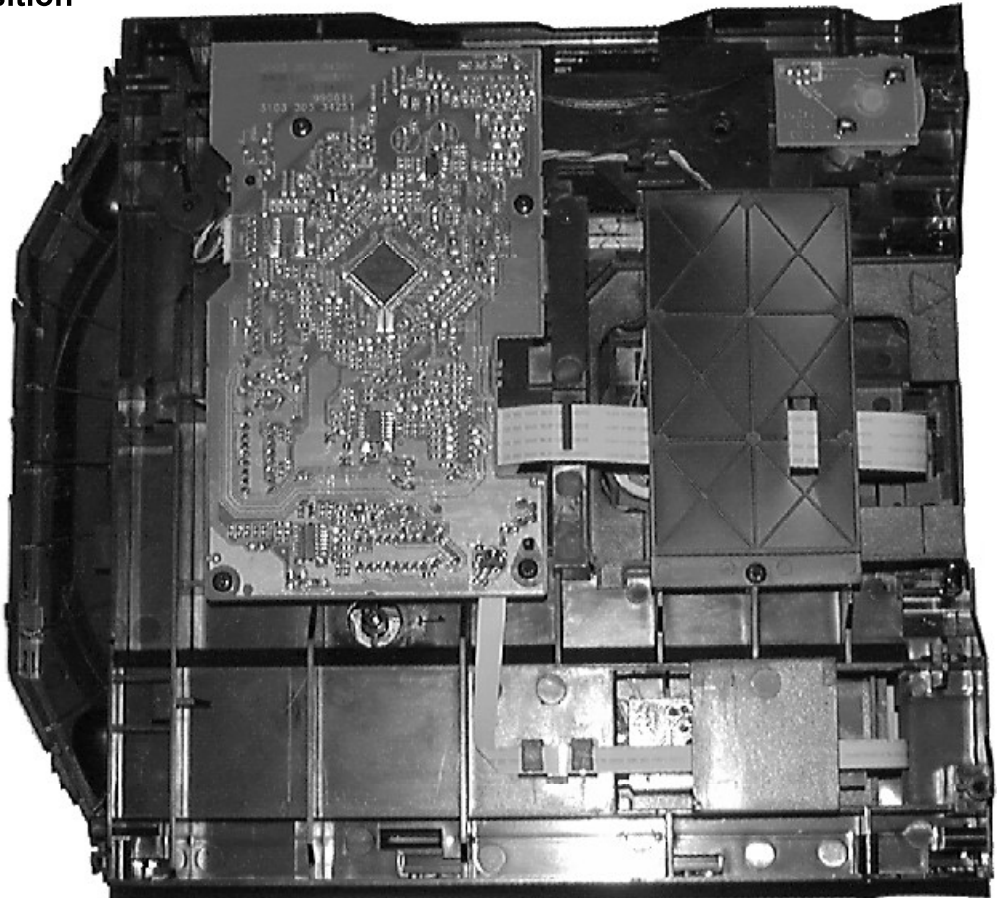
Assembling of Tray

1. Turn Cam (pos. 48) clockwise to end position.
2. If necessary - move Guiding (pos. 49) to the right end position.
3. Insert the Tray.

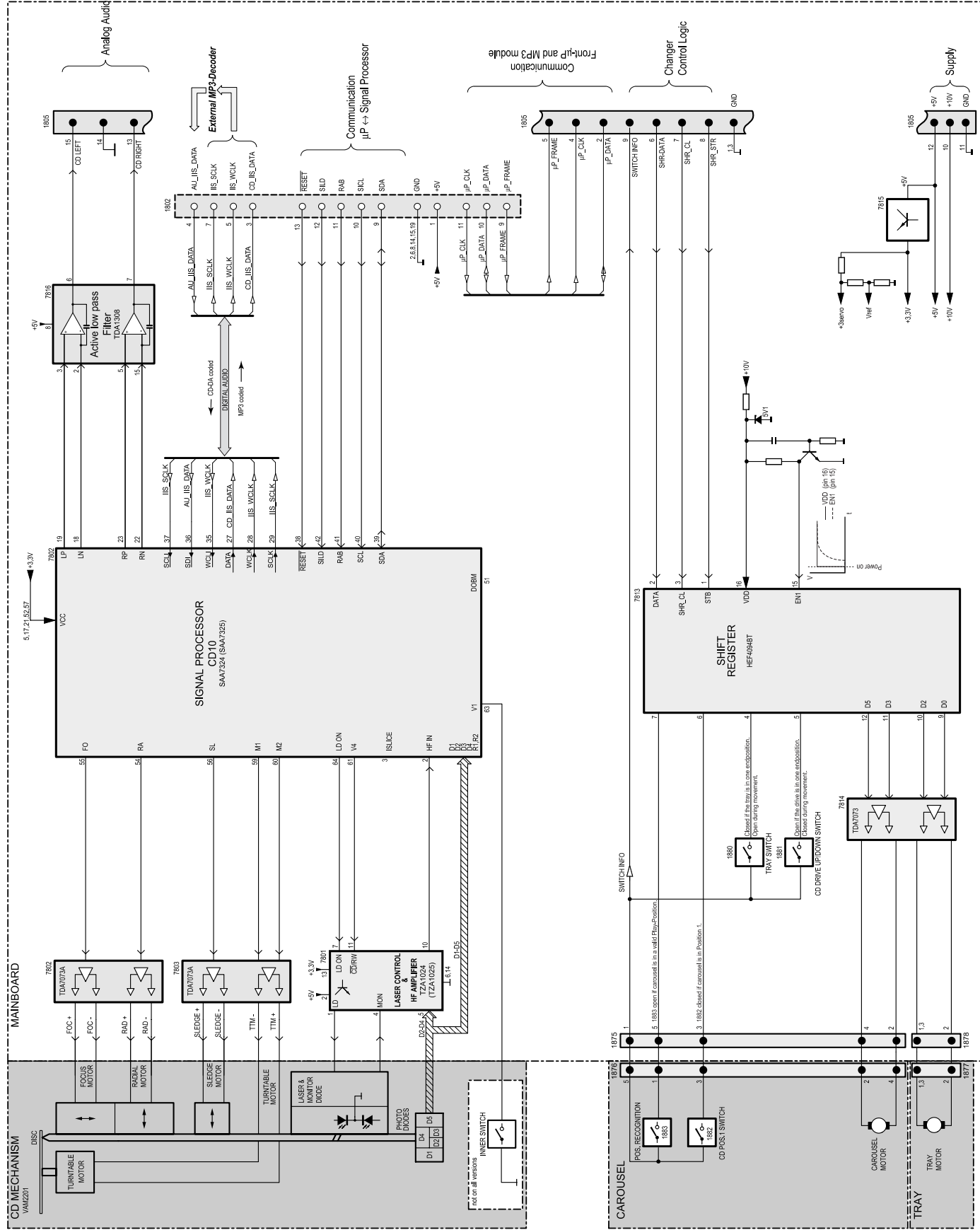




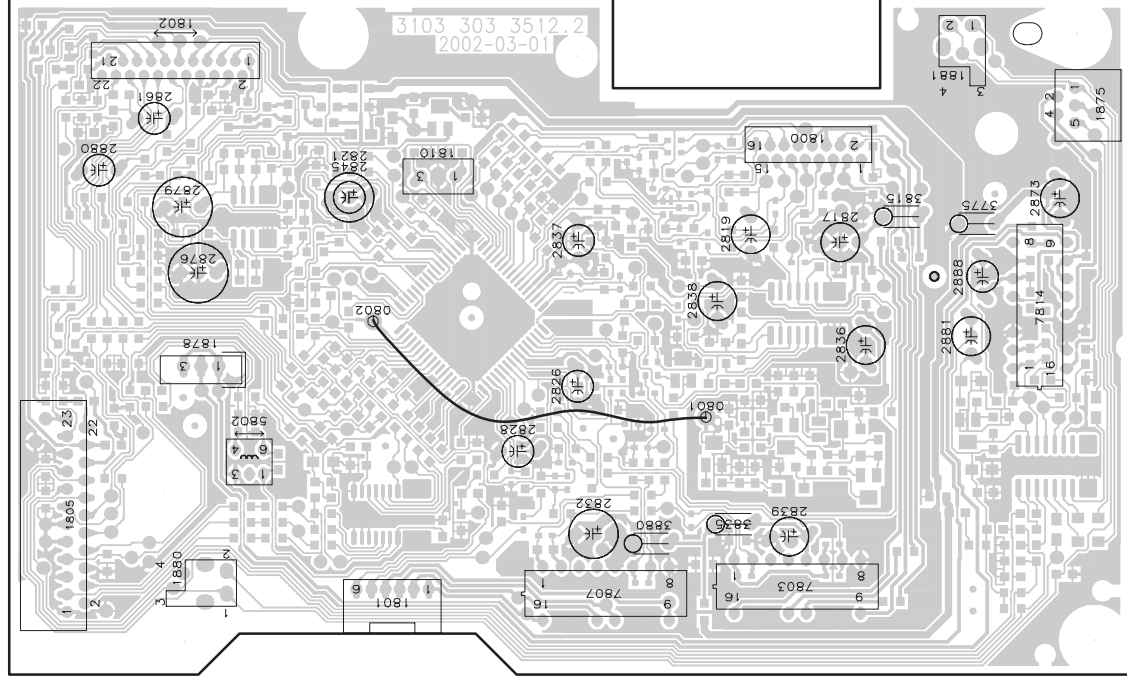
Service Position



Block Diagram 3CDC-LC MP3 Version

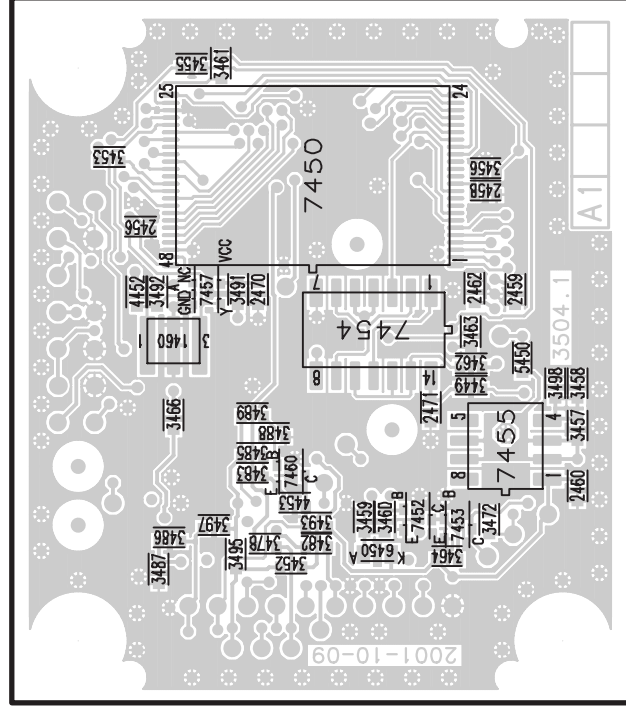


3CDC-LC-MP3CD2002 Components seen from Copperside



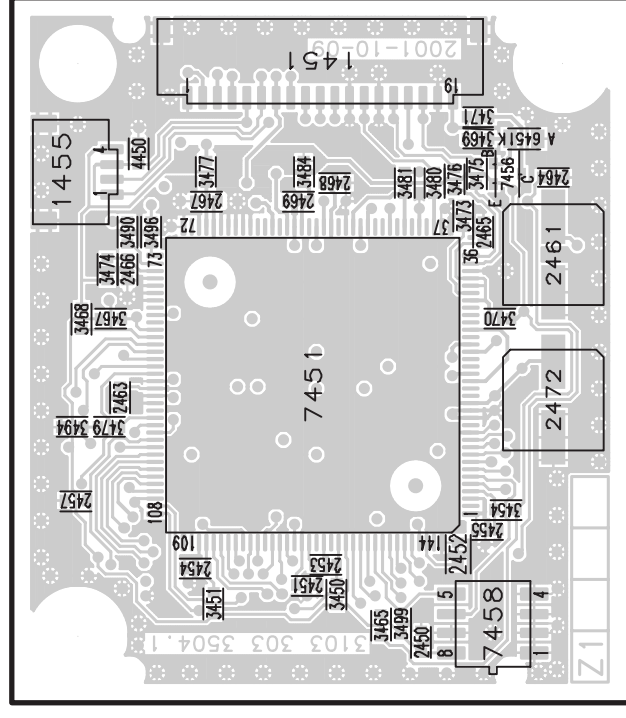
This assembly drawing shows a summary of all possible versions. For components used in a specific version see schematic diagram respectively partlist.

1 2 3 4 5



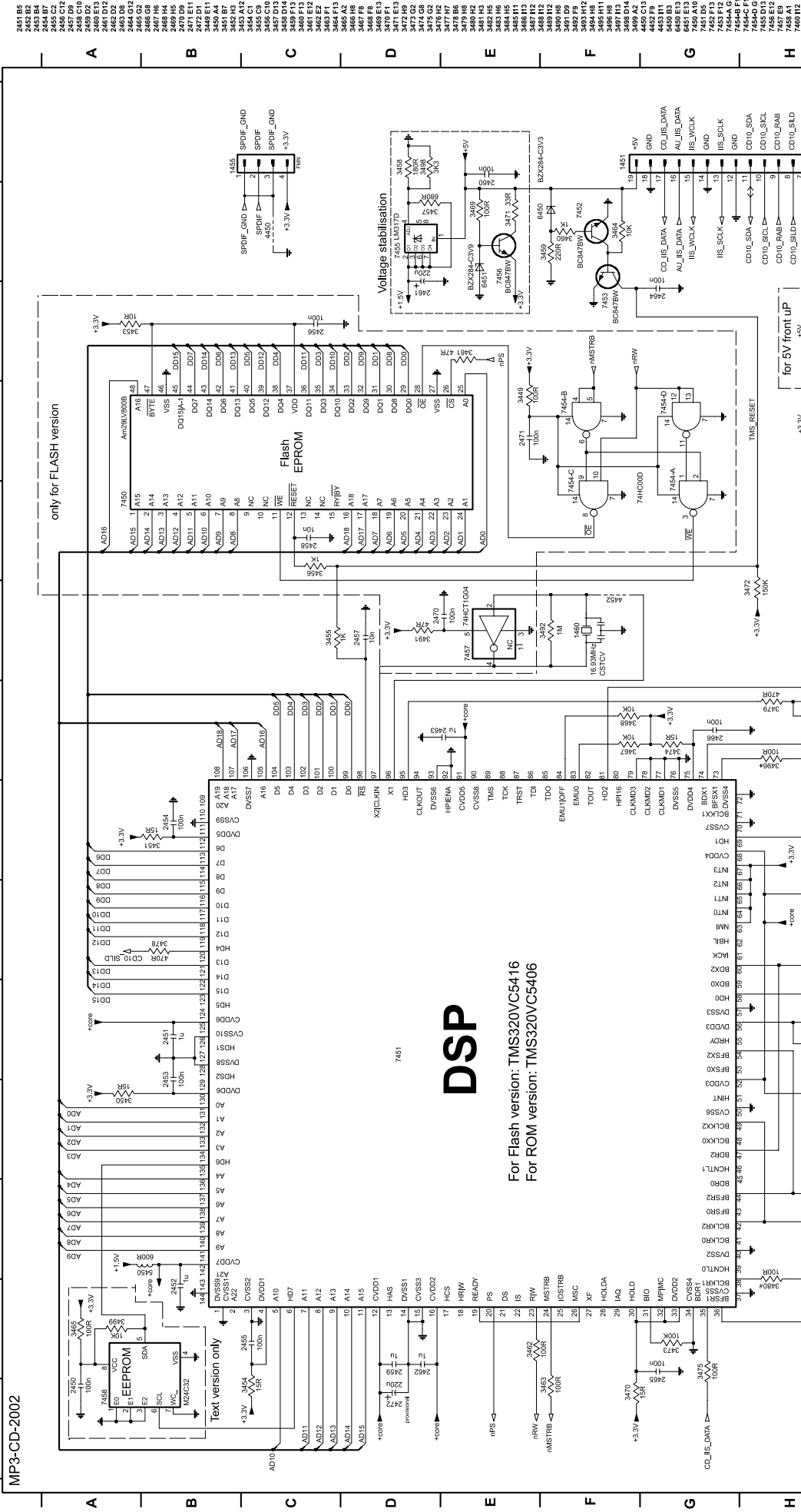
1 2 3 4 5

1 2 3 4 5



1 2 3 4 5

MP3-CD-2002



DSP

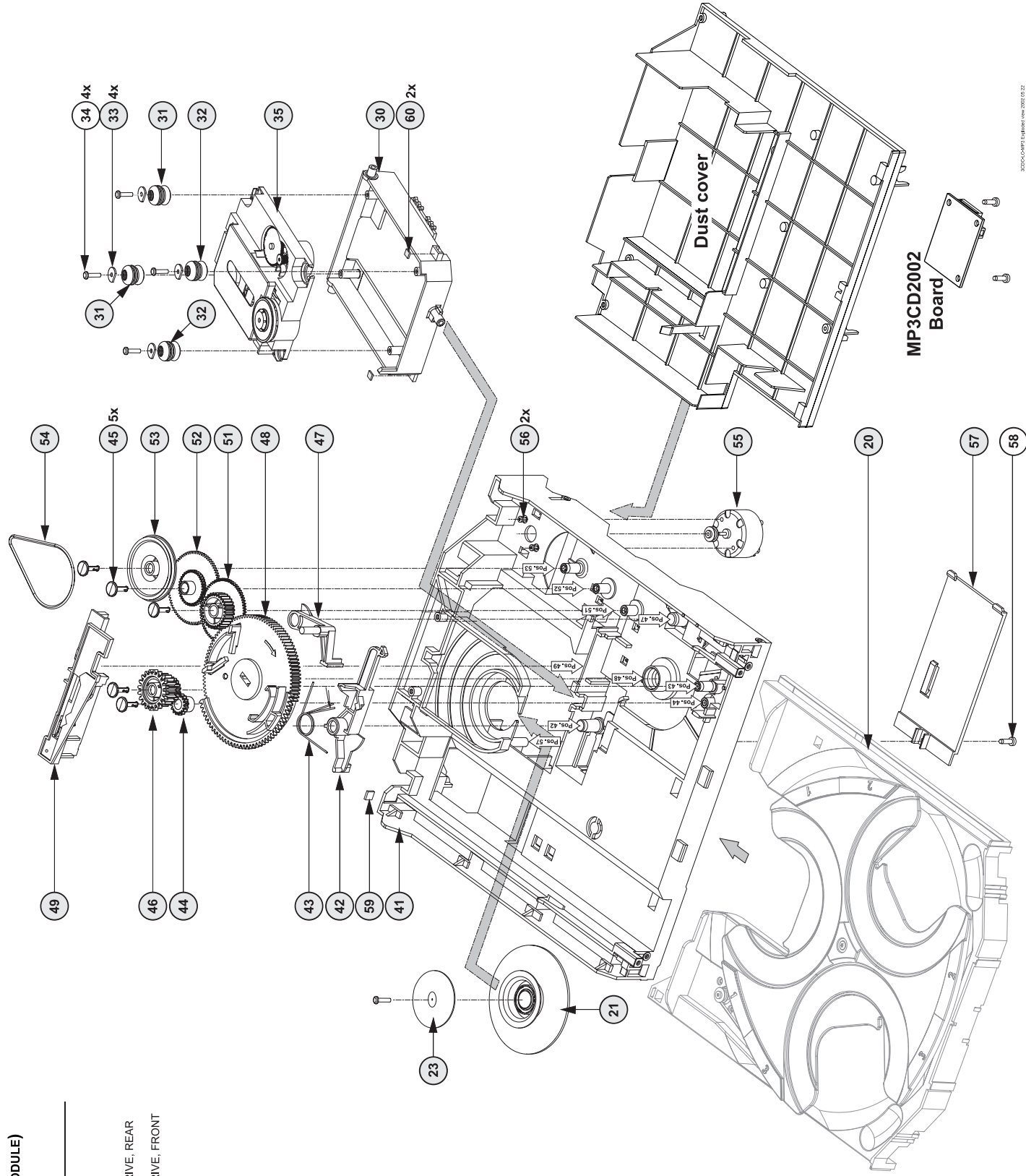
.... only for FLASH version
* only for ROM version

EXPLODED VIEW (3CDC-LC Module)

MECHANICAL PARTS Loader

20	3103 304 66500	DRAWER BLACK
21	3140 114 29070	PRESSURE RING-DA11
23	3140 111 21270	METAL RING-DA11
30	3103 304 66560	SUPPORT
31	4822 529 10386	RUBBER DAMPER CD DRIVE, REAR
32	4822 529 10387	RUBBER DAMPER CD DRIVE, FRONT
33	3103 304 06970	WASHER
35	3103 309 05350	CD DRIVE MCD1B
41	3103 304 66480	FRAME
42	3103 304 66540	BRACKET-GUIDING
43	3103 301 06460	SPRING-GUIDING
44	3103 304 06890	GEAR-3
45	3103 304 06980	NAIL FIXATION
46	3103 304 06880	GEAR-2
47	3103 304 66530	BRACKET-LOAD
48	3103 304 06910	CAM
49	3103 304 66510	GUIDING
51	3103 304 06900	GEAR-4
52	3103 304 06870	GEAR-1
53	3103 304 06960	PULLEY-FRAME
54	3103 304 66910	DRIVING-BELT-DRAWER
55	4822 361 10753	TRAY MOTOR
56	4822 502 12548	SCREW M2.6X3.5
57	3103 304 69680	COVER-DA11
59	4822 466 12146	RUBBER

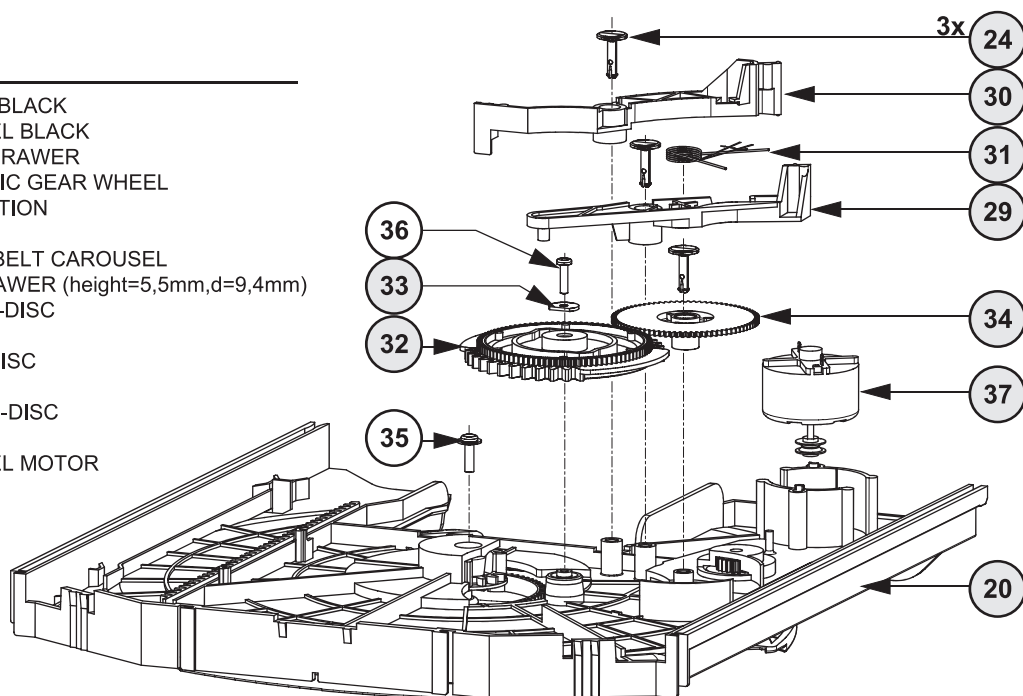
(X) spare part
(Y) non spare part



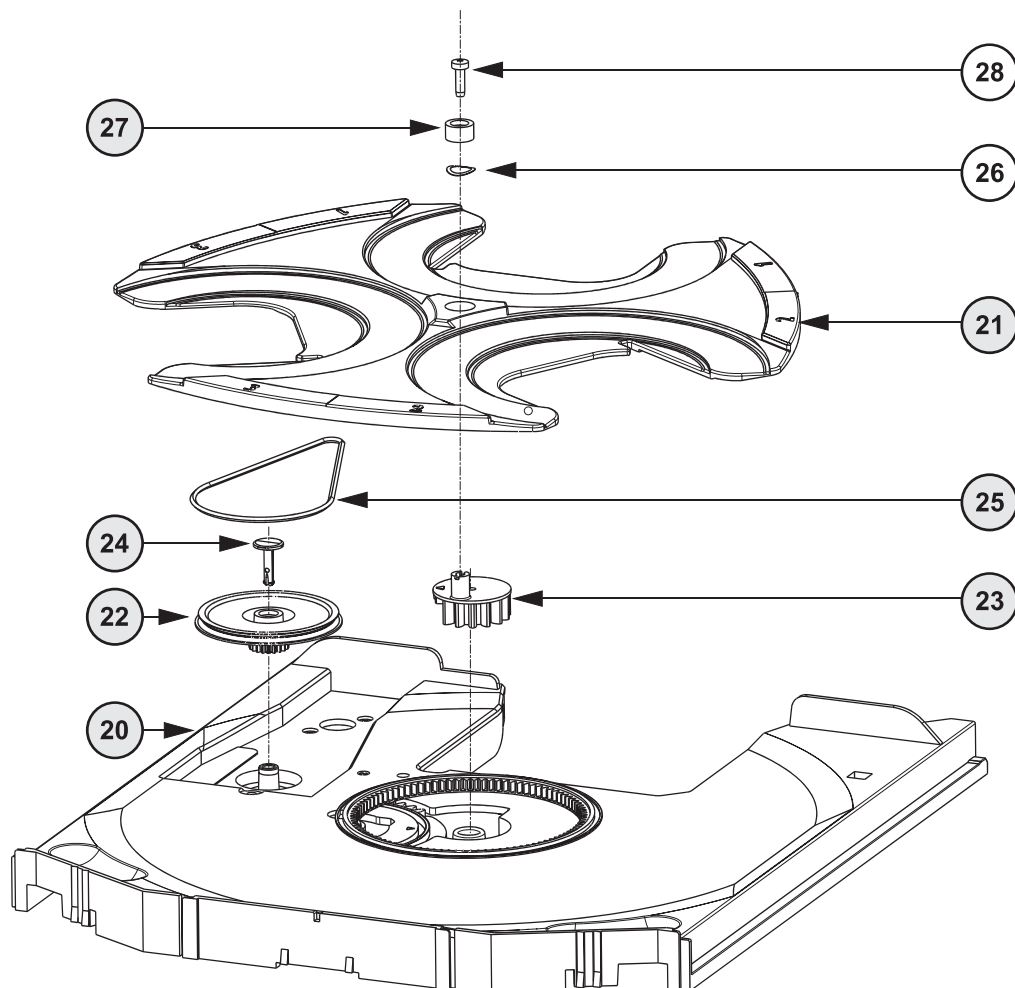
Drawer bottom view

MECHANICAL PARTS *Drawer*

20	3103 304 66500	DRAWER BLACK
21	3103 304 66490	CAROUSEL BLACK
22	3103 304 06860	PULLEY-DRAWER
23	3103 304 06850	ECCENTRIC GEAR WHEEL
24	3103 304 06980	NAIL FIXATION
25	3103 304 66850	DRIVING BELT CAROUSEL
27	4822 532 12365	BUSH DRAWER (height=5,5mm,d=9,4mm)
29	3103 304 66550	BRACKET-DISC
30	3103 304 66520	TUMBLER
31	3103 301 06470	SPRING-DISC
32	3103 304 06920	CONTROL-DISC
34	3103 304 06870	GEAR-1
37	4822 361 10753	CAROUSEL MOTOR



Drawer top view



- (X) spare part
(Y) non spare part

ELECTRICAL PARTSLIST 3CDC-LC MODULE**MISCELLANEOUS**

37	4822 361 10753	CAROUSEL MOTOR
55	4822 361 10753	TRAY MOTOR
1800	2422 025 17389	FFC-CONNECTOR 16Pin
1805	4822 265 10979	FFC-CONNECTOR 15Pin
1875	4822 267 10958	FFC-CONNECTOR 5Pin
1876	2422 025 08332	FFC-CONNECTOR 5Pin
1880	4822 276 13503	SWITCH
1881	4822 276 13503	SWITCH
1882	4822 276 13503	SWITCH
1883	4822 276 13503	SWITCH
8001	3103 308 93070	FLEX FOIL CABLE 19P, 170mm BD
8002	3103 308 91990	FLEXFOIL CABLE, 5P, 200mm AD
8005	3103 308 92930	FLEX FOIL CABLE 16P 170mm 1:n

CAPACITORS

2800 ©	4822 122 33753	150pF	5%	50V
2801 ©	4822 126 13883	220pF	5%	50V
2802 ©	4822 122 33753	150pF	5%	50V
2803 ©	4822 126 13883	220pF	5%	50V
2804 ©	4822 126 13193	4,7nF	10%	63V
2805 ©	4822 126 13883	220pF	5%	50V
2806 ©	4822 126 13883	220pF	5%	50V
2807 ©	4822 126 14241	330pF		50V
2808 ©	4822 126 13883	220pF	5%	50V
2809 ©	4822 126 13879	220nF	20%	16V
2810 ©	4822 126 14508	180pF	5%	50V
2811 ©	4822 126 13883	220pF	5%	50V
2812 ©	3198 024 44730	47nF	5%	50V
2813 ©	4822 122 33177	10nF	20%	50V
2814 ©	4822 126 14247	1,5nF	10%	50V
2815 ©	4822 126 14076	220nF	20%	25V
2816 ©	4822 126 13344	1,5nF	5%	63V
2817	4822 124 40769	4,7µF	20%	100V
2818 ©	4822 126 13344	1,5nF	5%	63V
2819	4822 124 40769	4,7µF	20%	100V
2820 ©	5322 126 11578	1nF	10%	63V
2821	4822 124 42383	220µF	20%	4V
2822 ©	4822 126 14238	2,2nF	10%	50V
2823 ©	4822 126 11785	47pF	5%	50V
2824 ©	5322 122 32654	22nF	10%	63V
2826	4822 124 12362	47µF	20%	4V
2827 ©	4822 122 33753	150pF	5%	50V
2828	4822 124 12362	47µF	20%	4V
2829 ©	4822 126 11669	27pF	10%	50V
2832	4822 124 40433	47µF	20%	25V
2833 ©	2222 867 15339	33pF	5%	50V
2835 ©	3198 024 44730	47nF	5%	50V
2836	4822 124 40769	4,7µF	20%	100V
2837	4822 124 22726	4,7µF	20%	35V
2838	4822 124 40248	10µF	20%	63V
2839	4822 124 40433	47µF	20%	25V
2840 ©	4822 126 14585	100nF	10%	50V
2841 ©	4822 122 33216	270pF	5%	50V
2842 ©	4822 126 14238	2,2nF	10%	50V
2843 ©	4822 126 14585	100nF	10%	50V
2844 ©	4822 122 33216	270pF	5%	50V
2848 ©	4822 122 33753	150pF	5%	50V
2860 ©	4822 126 14494	22nF	10%	25V
2861	4822 124 11947	10µF	20%	16V
2862 ©	4822 126 13883	220pF	5%	50V
2863 ©	4822 126 13883	220pF	5%	50V
2865 ©	5322 122 32654	22nF	10%	63V
2866 ©	4822 126 13751	47nF	10%	50V

CAPACITORS

2867 ©	4822 126 13883	220pF	5%	50V
2868 ©	2020 552 94427	100pF	5%	50V
2869 ©	2020 552 94427	100pF	5%	50V
2872 ©	3198 024 44730	47nF	5%	50V
2873	4822 124 80231	47µF	20%	16V
2876	4822 124 12245	220µF	20%	16V
2877 ©	4822 126 14226	82pF		50V
2878 ©	4822 126 13883	220pF	5%	50V
2879	4822 124 12245	220µF	20%	16V
2880	4822 124 11947	10µF	20%	16V
2881	4822 124 40769	4,7µF	20%	100V
2882 ©	4822 126 13883	220pF	5%	50V
2888	4822 124 11947	10µF	20%	16V

RESISTORS

3713 ©	4822 051 30223	22kΩ	5%	0,06W
3714 ©	4822 051 30103	10kΩ	5%	0,06W
3715 ©	4822 117 13632	100kΩ	1%	0,06W
3719 ©	4822 051 30392	3,9kΩ	5%	0,06W
3723 ©	4822 051 20273	27kΩ	5%	0,1W
3730 ©	4822 051 20333	33kΩ	5%	0,1W
3736 ©	4822 117 12925	47kΩ	1%	0,06W
3738 ©	4822 051 30271	270Ω	5%	0,06W
3740 ©	4822 051 20223	22kΩ	5%	0,1W
3741 ©	4822 051 20223	22kΩ	5%	0,1W
3742 ©	4822 051 20223	22kΩ	5%	0,1W
3743 ©	4822 051 20223	22kΩ	5%	0,1W
3744 ©	4822 051 30103	10kΩ	5%	0,06W
3745 ©	4822 117 10833	10kΩ	1%	0,1W
3746 ©	4822 051 30103	10kΩ	5%	0,06W
3747 ©	4822 117 12925	47kΩ	1%	0,06W
3748 ©	4822 051 30103	10kΩ	5%	0,06W
3750 ©	4822 051 30102	1kΩ	5%	0,06W
3751 ©	4822 051 30102	1kΩ	5%	0,06W
3752 ©	4822 117 13632	100kΩ	1%	0,06W
3753 ©	4822 117 13632	100kΩ	1%	0,06W
3754 ©	4822 051 30221	220Ω	5%	0,06W
3755 ©	4822 117 11503	220Ω	5%	0,1W
3757 ©	4822 117 11373	100Ω	1%	0,1W
3758 ©	4822 051 30101	100Ω	5%	0,06W
3760 ©	4822 117 10833	10kΩ	1%	0,1W
3761 ©	4822 051 30103	10kΩ	5%	0,06W
3762 ©	4822 051 30223	22kΩ	5%	0,06W
3763 ©	4822 051 30223	22kΩ	5%	0,06W
3764 ©	4822 117 11373	100Ω	1%	0,1W
3765 ©	4822 051 30103	10kΩ	5%	0,06W
3766 ©	4822 117 10833	10kΩ	1%	0,1W
3767 ©	4822 051 30339	33Ω	5%	0,06W
3769 ©	4822 051 30101	100Ω	5%	0,06W
3770 ©	4822 051 30102	1kΩ	5%	0,06W
3771 ©	4822 051 30102	1kΩ	5%	0,06W
3772 ©	4822 051 30471	470Ω	5%	0,06W
3773 ©	4822 117 10833	10kΩ	1%	0,1W
3774 ©	4822 117 11373	100Ω	1%	0,1W
3775 ▲	4822 052 10338	3,3Ω	5%	NFR25
3776 ©	4822 051 30103	10kΩ	5%	0,06W
3800 ©	4822 051 30273	27kΩ	5%	0,06W
3801 ©	4822 117 10833	10kΩ	1%	0,1W
3802 ©	4822 051 30273	27kΩ	5%	0,06W
3803 ©	4822 117 10833	10kΩ	1%	0,1W
3805 ©	4822 051 30103	10kΩ	5%	0,06W
3806 ©	4822 051 30103	10kΩ	5%	0,06W
3807 ©	4822 051 30103	10kΩ	5%	0,06W
3808 ©	4822 051 30103	10kΩ	5%	0,06W

ELECTRICAL PARTSLIST 3CDC-LC MODULE**RESISTORS**

3810	4822 051 30471	470Ω	5%	0,06W
3811	4822 051 30273	27kΩ	5%	0,06W
3812	4822 051 20471	470Ω	5%	0,1W
3813	4822 051 20471	470Ω	5%	0,1W
3814	4822 051 20471	470Ω	5%	0,1W
3815	4822 052 10478	4,7Ω	5%	NFR25
3816	4822 051 20471	470Ω	5%	0,1W
3817	4822 051 30471	470Ω	5%	0,06W
3818	4822 051 30471	470Ω	5%	0,06W
3819	4822 051 20471	470Ω	5%	0,1W
3820	4822 051 30332	3,3kΩ	5%	0,06W
3821	4822 051 30332	3,3kΩ	5%	0,06W
3822	4822 051 20332	3,3kΩ	5%	0,1W
3823	4822 051 30102	1kΩ	5%	0,06W
3824	4822 051 30102	1kΩ	5%	0,06W
3825	4822 051 10102	1kΩ	2%	0,25W
3826	4822 051 30223	22kΩ	5%	0,06W
3827	4822 051 20273	27kΩ	5%	0,1W
3829	4822 117 13608	4,7Ω	5%	0,06W
3830	4822 051 20223	22kΩ	5%	0,1W
3833	4822 051 30223	22kΩ	5%	0,06W
3834	4822 051 30223	22kΩ	5%	0,06W
3835	4822 052 10338	3,3Ω	5%	NFR25
3836	4822 117 12903	1,8kΩ	1%	0,06W
3837	4822 051 10102	1kΩ	2%	0,25W
3838	4822 051 30102	1kΩ	5%	0,06W
3839	4822 117 13632	100kΩ	1%	0,06W
3840	4822 051 20471	470Ω	5%	0,1W
3842	4822 117 10834	47kΩ	1%	0,1W
3843	4822 051 20333	33kΩ	5%	0,1W
3844	4822 051 30472	4,7kΩ	5%	0,06W
3845	4822 117 10834	47kΩ	1%	0,1W
3846	4822 051 20333	33kΩ	5%	0,1W
3847	4822 051 30682	6,8kΩ	5%	0,06W
3848	3198 021 52240	220kΩ	5%	0,1W
3849	4822 051 30472	4,7kΩ	5%	0,06W
3850	4822 051 30682	6,8kΩ	5%	0,06W
3853	4822 051 20471	470Ω	5%	0,1W
3854	4822 117 11373	100Ω	1%	0,1W
3855	4822 117 12971	15Ω	5%	0,06W
3856	4822 117 12521	68Ω	1%	0,1W
3857	4822 117 12521	68Ω	1%	0,1W
3861	4822 051 30103	10kΩ	5%	0,06W
3862	4822 051 20121	120Ω	5%	0,1W
3863	4822 051 30339	33Ω	5%	0,06W
3864	4822 051 30101	100Ω	5%	0,06W
3865	4822 051 30121	120Ω	5%	0,06W
3866	4822 051 30103	10kΩ	5%	0,06W
3871	4822 051 20683	68kΩ	5%	0,1W
3872	4822 051 30472	4,7kΩ	5%	0,06W
3878	4822 117 11503	220Ω	5%	0,1W
3880	4822 052 10338	3,3Ω	5%	NFR25
3881	4822 117 11503	220Ω	5%	0,1W
3882	4822 117 10837	100kΩ	1%	0,1W
3883	4822 051 10102	1kΩ	2%	0,25W
3890	4822 051 30332	3,3kΩ	5%	0,06W
3891	4822 051 30472	4,7kΩ	5%	0,06W
4700	4822 051 20008	CHIP JUMPER	0805	
4701	4822 051 20008	CHIP JUMPER	0805	
4702	4822 051 20008	CHIP JUMPER	0805	
4703	4822 051 20008	CHIP JUMPER	0805	
4704	4822 051 20008	CHIP JUMPER	0805	
4705	4822 051 20008	CHIP JUMPER	0805	
4706	4822 051 20008	CHIP JUMPER	0805	

RESISTORS

4707	4822 051 20008	CHIP JUMPER	0805
4708	4822 051 20008	CHIP JUMPER	0805
4709	4822 051 20008	CHIP JUMPER	0805
4710	4822 051 20008	CHIP JUMPER	0805
4711	4822 051 20008	CHIP JUMPER	0805
4712	4822 051 20008	CHIP JUMPER	0805
4713	4822 051 20008	CHIP JUMPER	0805
4714	4822 051 20008	CHIP JUMPER	0805
4715	4822 051 20008	CHIP JUMPER	0805
4716	4822 051 20008	CHIP JUMPER	0805
4717	4822 051 30008	CHIP JUMPER	0603
4718	4822 051 20008	CHIP JUMPER	0805
4719	4822 051 20008	CHIP JUMPER	0805
4720	4822 051 20008	CHIP JUMPER	0805
4722	4822 051 20008	CHIP JUMPER	0805
4724	4822 051 20008	CHIP JUMPER	0805
4726	4822 051 20008	CHIP JUMPER	0805
4727	4822 051 20008	CHIP JUMPER	0805
4728	4822 051 20008	CHIP JUMPER	0805
4729	4822 051 20008	CHIP JUMPER	0805
4730	4822 051 20008	CHIP JUMPER	0805
4731	4822 051 30008	CHIP JUMPER	0603
4732	4822 051 20008	CHIP JUMPER	0805
4733	4822 051 30008	CHIP JUMPER	0603
4734	4822 051 20008	CHIP JUMPER	0805
4735	4822 051 20008	CHIP JUMPER	0805
4736	4822 051 30008	CHIP JUMPER	0603
4737	4822 051 30008	CHIP JUMPER	0603
4738	4822 051 30008	CHIP JUMPER	0603
4739	4822 051 30008	CHIP JUMPER	0603
4740	4822 051 30008	CHIP JUMPER	0603
4741	4822 051 20008	CHIP JUMPER	0805
4742	4822 051 20008	CHIP JUMPER	0805
4743	4822 051 20008	CHIP JUMPER	0805
4744	4822 051 30008	CHIP JUMPER	0603
4745	4822 051 20008	CHIP JUMPER	0805
4746	4822 051 20008	CHIP JUMPER	0805
4747	4822 051 20008	CHIP JUMPER	0805
4748	4822 051 20008	CHIP JUMPER	0805
4749	4822 051 30008	CHIP JUMPER	0603
4801	4822 051 20008	CHIP JUMPER	0805
4804	4822 051 20008	CHIP JUMPER	0805
4806	4822 051 20008	CHIP JUMPER	0805
4807	4822 051 20008	CHIP JUMPER	0805
4808	4822 051 20008	CHIP JUMPER	0805
4809	4822 051 20008	CHIP JUMPER	0805
4810	4822 051 20008	CHIP JUMPER	0805
4811	4822 051 20008	CHIP JUMPER	0805
4820	4822 051 20008	CHIP JUMPER	0805
4823	4822 051 30008	CHIP JUMPER	0603
4824	4822 051 30008	CHIP JUMPER	0603
4825	4822 051 20008	CHIP JUMPER	0805
4826	4822 051 20008	CHIP JUMPER	0805
4828	4822 051 30008	CHIP JUMPER	0603
4829	4822 051 20008	CHIP JUMPER	0805
4830	4822 051 20008	CHIP JUMPER	0805
4831	4822 051 20008	CHIP JUMPER	0805
4832	4822 051 30008	CHIP JUMPER	0603
4833	4822 051 20008	CHIP JUMPER	0805
4834	4822 051 20008	CHIP JUMPER	0805
4837	4822 051 20008	CHIP JUMPER	0805
4838	4822 051 30008	CHIP JUMPER	0603
4839	4822 051 20008	CHIP JUMPER	0805
4840	4822 051 20008	CHIP JUMPER	0805

ELECTRICAL PARTSLIST 3CDC-LC MODULE**RESISTORS**

4841 ©	4822 051 20008	CHIP JUMPER 0805
4842 ©	4822 051 20008	CHIP JUMPER 0805
4844 ©	4822 051 20008	CHIP JUMPER 0805
4845 ©	4822 051 20008	CHIP JUMPER 0805
4846 ©	4822 051 20008	CHIP JUMPER 0805
4847 ©	4822 051 20008	CHIP JUMPER 0805
4848 ©	4822 051 20008	CHIP JUMPER 0805
4849 ©	4822 051 30008	CHIP JUMPER 0603
4851 ©	4822 051 30008	CHIP JUMPER 0603
4855 ©	4822 051 20008	CHIP JUMPER 0805
4856 ©	4822 051 20008	CHIP JUMPER 0805
4857 ©	4822 051 20008	CHIP JUMPER 0805
4858 ©	4822 051 20008	CHIP JUMPER 0805
4868 ©	4822 051 20008	CHIP JUMPER 0805
4869 ©	4822 051 20008	CHIP JUMPER 0805
4870 ©	4822 051 20008	CHIP JUMPER 0805
4871 ©	4822 051 20008	CHIP JUMPER 0805
4872 ©	4822 051 20008	CHIP JUMPER 0805
4873 ©	4822 051 20008	CHIP JUMPER 0805
4874 ©	4822 051 20008	CHIP JUMPER 0805
4875 ©	4822 051 20008	CHIP JUMPER 0805
4876 ©	4822 051 20008	CHIP JUMPER 0805
4878 ©	4822 051 20008	CHIP JUMPER 0805
4879 ©	4822 051 20008	CHIP JUMPER 0805
4880 ©	4822 051 20008	CHIP JUMPER 0805
4882 ©	4822 051 20008	CHIP JUMPER 0805
4883 ©	4822 051 20008	CHIP JUMPER 0805
4884 ©	4822 051 20008	CHIP JUMPER 0805
4885 ©	4822 051 20008	CHIP JUMPER 0805
4886 ©	4822 051 20008	CHIP JUMPER 0805
4887 ©	4822 051 30008	CHIP JUMPER 0603
4888 ©	4822 051 20008	CHIP JUMPER 0805
4889 ©	4822 051 20008	CHIP JUMPER 0805
4890 ©	4822 051 20008	CHIP JUMPER 0805
4891 ©	4822 051 30008	CHIP JUMPER 0603

RESISTORS

4892 ©	4822 051 20008	CHIP JUMPER 0805
4893 ©	4822 051 20008	CHIP JUMPER 0805
4894 ©	4822 051 20008	CHIP JUMPER 0805
4895 ©	4822 051 20008	CHIP JUMPER 0805
4896 ©	4822 051 20008	CHIP JUMPER 0805
4897 ©	4822 051 20008	CHIP JUMPER 0805
4898 ©	4822 051 20008	CHIP JUMPER 0805
4899 ©	4822 051 20008	CHIP JUMPER 0805

COILS

1810	2422 540 98519	RESONATOR 8,467MHz
------	----------------	--------------------

DIODES

6801 ©	4822 130 11397	BAS316
6802 ©	4822 130 11397	BAS316
6803 ©	4822 130 11397	BAS316
6804 ©	4822 130 11397	BAS316
6805 ©	9340 548 52115	BZX284-C5V1
6807 ©	9322 129 34685	BZX284-C3V9
6808 ©	4822 130 11397	BAS316
6809 ©	9322 129 34685	BZX284-C3V9

TRANSISTORS

7806 ©	5322 130 60159	BC846B
7812 ©	5322 130 60159	BC846B
7815 ©	5322 130 60159	BC846B

INTEGRATED CIRCUITS

7801 ©	9352 622 36118	TZA1025T/V2 HF-Amplifier
7802 ©	9352 641 80557	SAA7324H/M2B,"CD10" SIGN.PROC.
7803	4822 209 32852	TDA7073A/N2
7807	4822 209 32852	TDA7073A/N2
7811 ©	4822 209 33165	TDA1308T/N1
7813 ©	5322 209 11306	HEF4094BT, SHIFT REGISTER
7814	4822 209 32852	TDA7073A/N2

ELECTRICAL PARTSLIST MP3CD2002 MODULE**MISCELLANEOUS**

	3103 308 67020	complete MP3CD2002 Module
1451	2422 025 17303	FLEX FOIL CONNECTOR 19P

CAPACITORS

2450 ©	2238 586 59812	100nF	10%	50V
2451 ©	3198 017 41050	1µF	20%	10V
2452 ©	3198 017 41050	1µF	20%	10V
2453 ©	2238 586 59812	100nF	10%	50V
2454 ©	2238 586 59812	100nF	10%	50V

2455 ©	2238 586 59812	100nF	10%	50V
2456 ©	2238 586 59812	100nF	10%	50V
2457 ©	5322 126 11583	10nF	10%	63V
2458 ©	5322 126 11583	10nF	10%	63V
2459 ©	3198 017 41050	1µF	20%	10V

2460 ©	2238 586 59812	100nF	10%	50V
2461 ©	4822 124 81059	220µF	20%	4V
2462 ©	3198 017 41050	1µF	20%	10V
2463 ©	3198 017 41050	1µF	20%	10V
2464 ©	2238 586 59812	100nF	10%	50V

2465 ©	2238 586 59812	100nF	10%	50V
2466 ©	2238 586 59812	100nF	10%	50V
2467 ©	3198 017 41050	1µF	20%	10V
2468 ©	3198 017 41050	1µF	20%	10V
2469 ©	2238 586 59812	100nF	10%	50V

2470 ©	2238 586 59812	100nF	10%	50V
2471 ©	2238 586 59812	100nF	10%	50V

RESISTORS

3449 ©	4822 051 30101	100Ω	5%	0,06W
3450 ©	4822 117 12971	15Ω	5%	0,06W
3451 ©	4822 117 12971	15Ω	5%	0,06W
3452 ©	4822 051 30101	100Ω	5%	0,06W
3453 ©	4822 051 30109	10Ω	5%	0,06W

3454 ©	4822 117 12971	15Ω	5%	0,06W
3455 ©	4822 051 30102	1kΩ	5%	0,06W
3456 ©	4822 051 30102	1kΩ	5%	0,06W
3457 ©	5322 117 13051	680Ω	1%	0,063W
3458 ©	5322 117 13061	180Ω	1%	0,063W

3459 ©	4822 051 30221	220Ω	5%	0,06W
3460 ©	4822 051 30102	1kΩ	5%	0,06W
3461 ©	4822 051 30479	47Ω	5%	0,06W
3462 ©	4822 051 30101	100Ω	5%	0,06W
3463 ©	4822 051 30101	100Ω	5%	0,06W

3464 ©	4822 051 30103	10kΩ	5%	0,06W
3465 ©	4822 051 30101	100Ω	5%	0,06W
3466 ©	4822 051 30471	470Ω	5%	0,06W
3467 ©	4822 051 30103	10kΩ	5%	0,06W
3468 ©	4822 051 30103	10kΩ	5%	0,06W

3469 ©	4822 051 30101	100Ω	5%	0,06W
3470 ©	4822 117 12971	15Ω	5%	0,06W
3471 ©	4822 051 30339	33Ω	5%	0,06W
3472 ©	4822 051 30154	150kΩ	5%	0,06W
3473 ©	4822 117 13632	100kΩ	1%	0,06W

RESISTORS

3474 ©	4822 117 12971	15Ω	5%	0,06W
3475 ©	4822 051 30101	100Ω	5%	0,06W
3476 ©	4822 051 30101	100Ω	5%	0,06W
3477 ©	4822 051 30471	470Ω	5%	0,06W
3478 ©	4822 051 30471	470Ω	5%	0,06W

3479 ©	4822 051 30471	470Ω	5%	0,06W
3480 ©	4822 051 30101	100Ω	5%	0,06W
3481 ©	4822 051 30101	100Ω	5%	0,06W
3482 ©	4822 051 30471	470Ω	5%	0,06W
3483 ©	4822 051 30101	100Ω	5%	0,06W

3484 ©	4822 117 12971	15Ω	5%	0,06W
3486 ©	4822 051 30101	100Ω	5%	0,06W
3488 ©	4822 117 13632	100kΩ	1%	0,06W
3489 ©	4822 051 30103	10kΩ	5%	0,06W
3490 ©	4822 051 30101	100Ω	5%	0,06W

3491 ©	4822 051 30479	47Ω	5%	0,06W
3492 ©	4822 051 30105	1MΩ	5%	0,06W
3493 ©	4822 051 30103	10kΩ	5%	0,06W
3494 ©	4822 051 30103	10kΩ	5%	0,06W
3495 ©	4822 051 30103	10kΩ	5%	0,06W

3497 ©	4822 051 30103	10kΩ	5%	0,06W
3498 ©	4822 051 30332	3,3kΩ	5%	0,06W
3499 ©	4822 051 30103	10kΩ	5%	0,06W
4450 ©	4822 051 30008	CHIP JUMPER 0603		

COILS

1460	4822 242 10989	CER.RES. 16,9MHz
5450 ©	4822 157 11074	100µH

DIODES

6450 ©	4822 130 11411	BZX284-C3V3
6451 ©	4822 130 11366	BZX284-C3V9
7454	4822 130 34174	BZX79-B4V7

TRANSISTORS

7452 ©	3198 010 42310	BC847BW
7453 ©	3198 010 42310	BC847BW
7456 ©	3198 010 42310	BC847BW
7460 ©	3198 010 42310	BC847BW

INTEGRATED CIRCUITS

7450 ©	not available	please order complete MP3 module
7451 ©	not available	please order complete MP3 module
7455 ©	4822 209 17108	LM317LD Voltage Regulator
7457 ©	9352 456 50115	HC1G04, Inverter
7458 ©	9322 130 41668	M24C64, EEPROM

3103 308 67020	complete MP3CD2002 Module
-----------------------	----------------------------------

BRIEF INTRODUCTION OF THE AF12 BOARD

The AF12 Board consists of the following features :

- a. IDA7468D IC
TDA7468D IC (7501) which includes functions such as source selection, loudness control, dynamic bass control, treble control, volume control and muting function. Sound features such as ALC, DBB, DSC and IS are controllable via I²C Bus from the microprocessor.
- The TDA7468D IC caters for 4 input sources namely TUNER, PC LINK, CD and AUX. It also has a Mic mix input. In our application, software will switch the input source to previous source MUTE during STANDBY mode and some other occasions where noise from other input sources is undesirable.
- Note that the input to the TDA7468D IC must be ac coupled to prevent 'pop' noise. Input networks are included to provide appropriate attenuation for various sources.

- b. SIMPLE MIC MIXING
The AF12 Board has provisions which can be configured to cater for one of the following:
MM : which caters for Mic mixing with additional Mic amplifier board.
NM : non Mic mixing.

- c. LINE OUT
Line out cinch socket for connection to external amplifier.

- d. SUB-WOOFER OUT
Sub-woofer out cinch socket for connection to active sub-woofer speaker.

- e. INCREDIBLE SURROUND
Incredible surround effect using transistor circuit to create phase shifting and spatial effect.

- f. HEADPHONE AMPLIFIER
Headphone amplifier to drive 32 ohm to 1kohm headphone.

- g. CD STANDBY CONTROL
CD Standby Control circuit which switches on the supply to CD servo control IC, digital out buffer IC, HF circuit and the laser light pen in CD mode only.

- h. ATTENUATION NETWORK
Attenuation network is provided at the output of the AF12 Board for interfacing with power board of different output power.

- i. CD DIGITAL OUT
CD Digital out cinch socket for connection to external digital audio decoders.

AF12 BOARD

TABLE OF CONTENTS

Brief Introduction of the AF12 Board 8-1

AF12 Board - Component Layout 8-2

AF12 Board - Component & Chip Layout (Mapping) 8-3

AF12 Board - Chip Layout 8-4

AF12 Board - Circuit Diagram (Part 1) 8-5

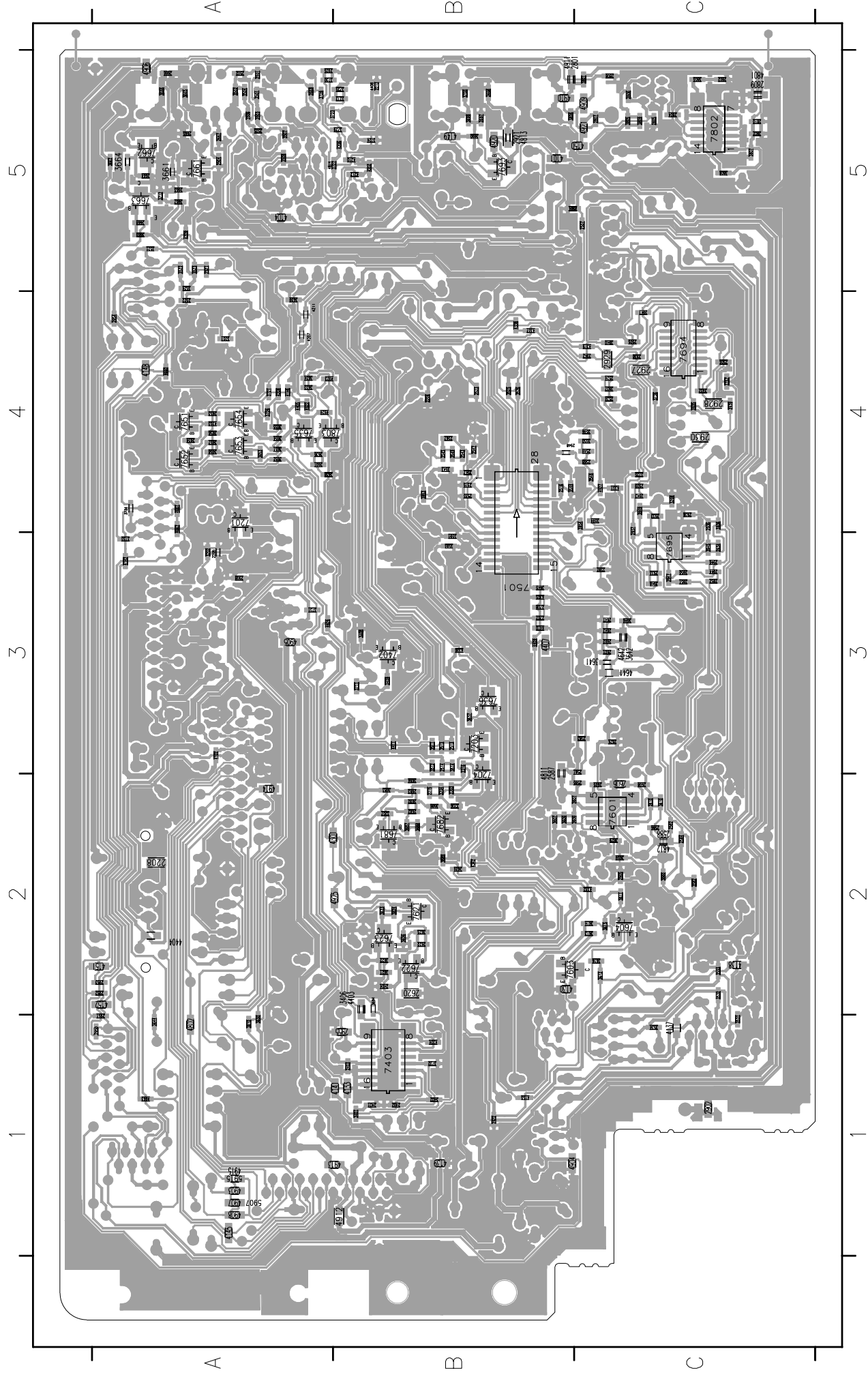
AF12 Board - Circuit Diagram (Part 2) 8-6

AF12 Board - Circuit Diagram (Part 3) 8-7

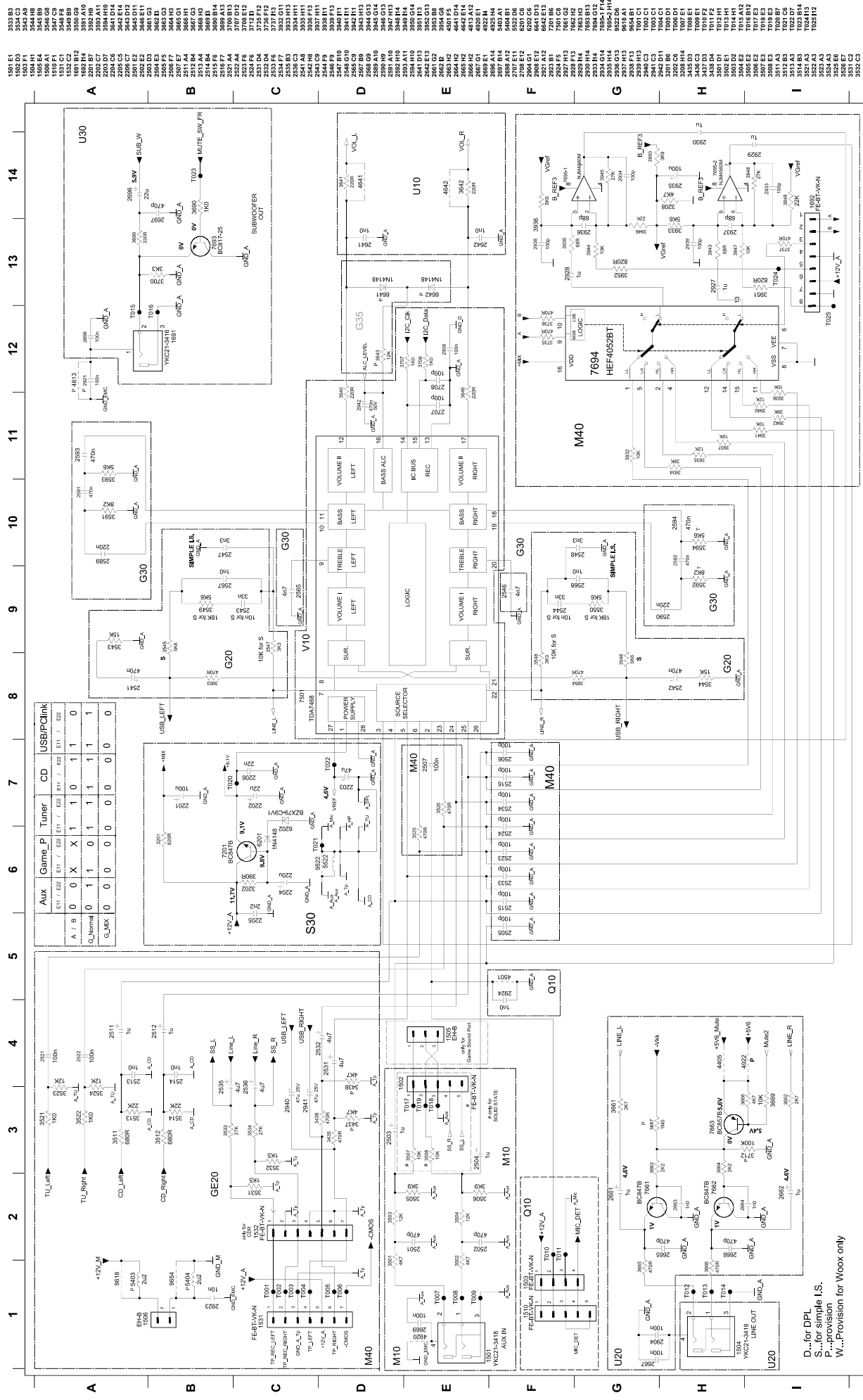
Video Out Cinch part - Layout & Circuit diagram 8-8

Electrical parts list..... 8-8

[illegible][illegible]

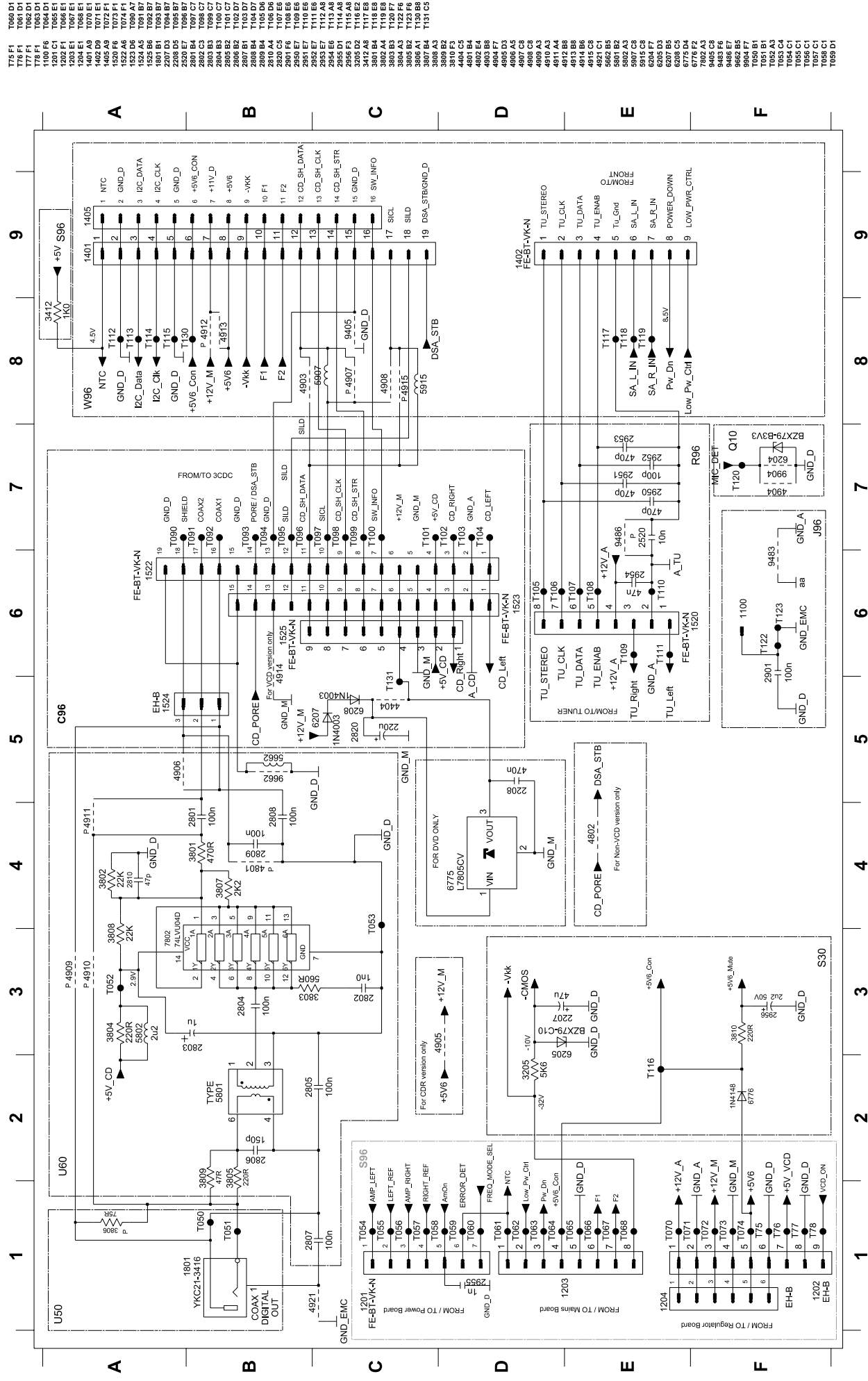


AF12 BOARD - CIRCUIT DIAGRAM (PART 1)

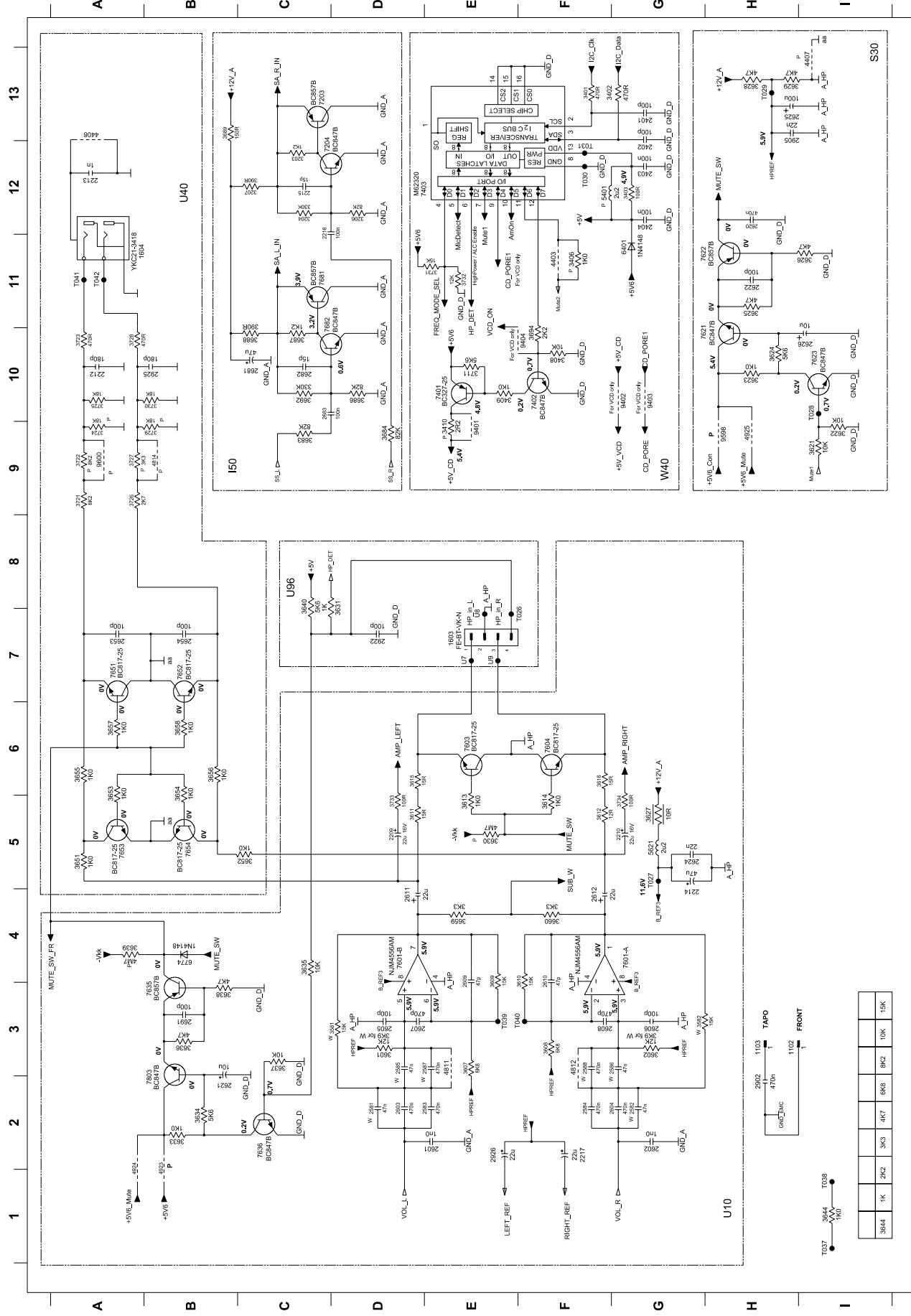


D...for DPL
S...for simple I.S.
P...provision
W...Provision for Woxx only

AF12 BOARD - CIRCUIT DIAGRAM (PART 2)



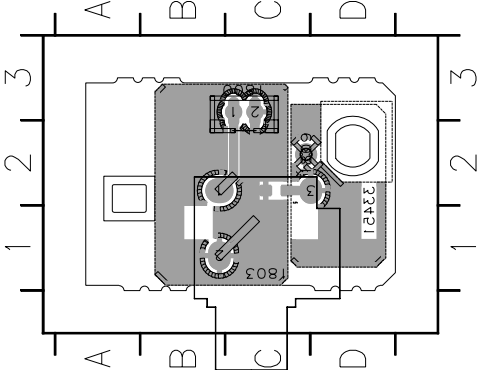
AF12 BOARD - CIRCUIT DIAGRAM (PART 3)



3686 D10
3687 C10
3688 C10
3689 C10
3690 C10
3691 C10
3692 C10
3693 C10
3694 F10
3695 F10
3696 F10
3697 F10
3698 F10
3699 F10
3700 F10
3701 F10
3702 F10
3703 F10
3704 F10
3705 F10
3706 F10
3707 F10
3708 F10
3709 F10
3710 F10
3711 F10
3712 F10
3713 F10
3714 F10
3715 F10
3716 F10
3717 F10
3718 F10
3719 F10
3720 F10
3721 F10
3722 F10
3723 F10
3724 F10
3725 F10
3726 F10
3727 F10
3728 F10
3729 F10
3730 F10
3731 F10
3732 F10
3733 F10
3734 F10
3735 F10
3736 F10
3737 F10
3738 F10
3739 F10
3740 F10
3741 F10
3742 F10
3743 F10
3744 F10
3745 F10
3746 F10
3747 F10
3748 F10
3749 F10
3750 F10
3751 F10
3752 F10
3753 F10
3754 F10
3755 F10
3756 F10
3757 F10
3758 F10
3759 F10
3760 F10
3761 F10
3762 F10
3763 F10
3764 F10
3765 F10
3766 F10
3767 F10
3768 F10
3769 F10
3770 F10
3771 F10
3772 F10
3773 F10
3774 F10
3775 F10
3776 F10
3777 F10
3778 F10
3779 F10
3780 F10
3781 F10
3782 F10
3783 F10
3784 F10
3785 F10
3786 F10
3787 F10
3788 F10
3789 F10
3790 F10
3791 F10
3792 F10
3793 F10
3794 F10
3795 F10
3796 F10
3797 F10
3798 F10
3799 F10
3800 F10
3801 F10
3802 F10
3803 F10
3804 F10
3805 F10
3806 F10
3807 F10
3808 F10
3809 F10
3810 F10
3811 F10
3812 F10
3813 F10
3814 F10
3815 F10
3816 F10
3817 F10
3818 F10
3819 F10
3820 F10
3821 F10
3822 F10
3823 F10
3824 F10
3825 F10
3826 F10
3827 F10
3828 F10
3829 F10
3830 F10
3831 F10
3832 F10
3833 F10
3834 F10
3835 F10
3836 F10
3837 F10
3838 F10
3839 F10
3840 F10
3841 F10
3842 F10
3843 F10
3844 F10
3845 F10
3846 F10
3847 F10
3848 F10
3849 F10
3850 F10
3851 F10
3852 F10
3853 F10
3854 F10
3855 F10
3856 F10
3857 F10
3858 F10
3859 F10
3860 F10
3861 F10
3862 F10
3863 F10
3864 F10
3865 F10
3866 F10
3867 F10
3868 F10
3869 F10
3870 F10
3871 F10
3872 F10
3873 F10
3874 F10
3875 F10
3876 F10
3877 F10
3878 F10
3879 F10
3880 F10
3881 F10
3882 F10
3883 F10
3884 F10
3885 F10
3886 F10
3887 F10
3888 F10
3889 F10
3890 F10
3891 F10
3892 F10
3893 F10
3894 F10
3895 F10
3896 F10
3897 F10
3898 F10
3899 F10
3900 F10
3901 F10
3902 F10
3903 F10
3904 F10
3905 F10
3906 F10
3907 F10
3908 F10
3909 F10
3910 F10
3911 F10
3912 F10
3913 F10
3914 F10
3915 F10
3916 F10
3917 F10
3918 F10
3919 F10
3920 F10
3921 F10
3922 F10
3923 F10
3924 F10
3925 F10
3926 F10
3927 F10
3928 F10
3929 F10
3930 F10
3931 F10
3932 F10
3933 F10
3934 F10
3935 F10
3936 F10
3937 F10
3938 F10
3939 F10
3940 F10
3941 F10
3942 F10
3943 F10
3944 F10
3945 F10
3946 F10
3947 F10
3948 F10
3949 F10
3950 F10
3951 F10
3952 F10
3953 F10
3954 F10
3955 F10
3956 F10
3957 F10
3958 F10
3959 F10
3960 F10
3961 F10
3962 F10
3963 F10
3964 F10
3965 F10
3966 F10
3967 F10
3968 F10
3969 F10
3970 F10
3971 F10
3972 F10
3973 F10
3974 F10
3975 F10
3976 F10
3977 F10
3978 F10
3979 F10
3980 F10
3981 F10
3982 F10
3983 F10
3984 F10
3985 F10
3986 F10
3987 F10
3988 F10
3989 F10
3990 F10
3991 F10
3992 F10
3993 F10
3994 F10
3995 F10
3996 F10
3997 F10
3998 F10
3999 F10
4000 F10

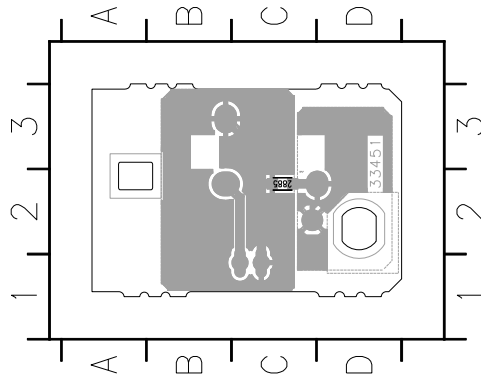
VIDEO OUT CINCH BOARD -
COMPONENT LAYOUT

1800 C3 1803 C1 1809 C2



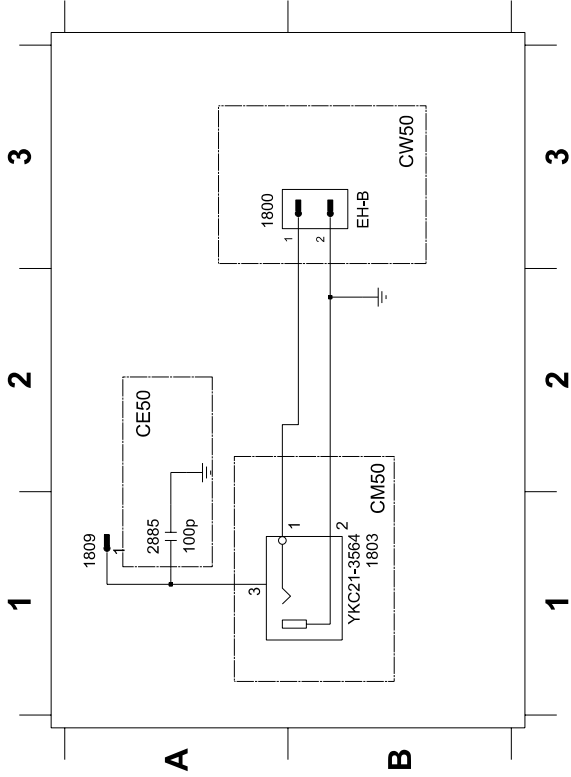
VIDEO OUT CINCH BOARD - CHIP
LAYOUT

2885 C2



VIDEO OUT CINCH BOARD - CIRCUIT DIAGRAM

1800 A3 1803 B1 1809 A1 2885 A1

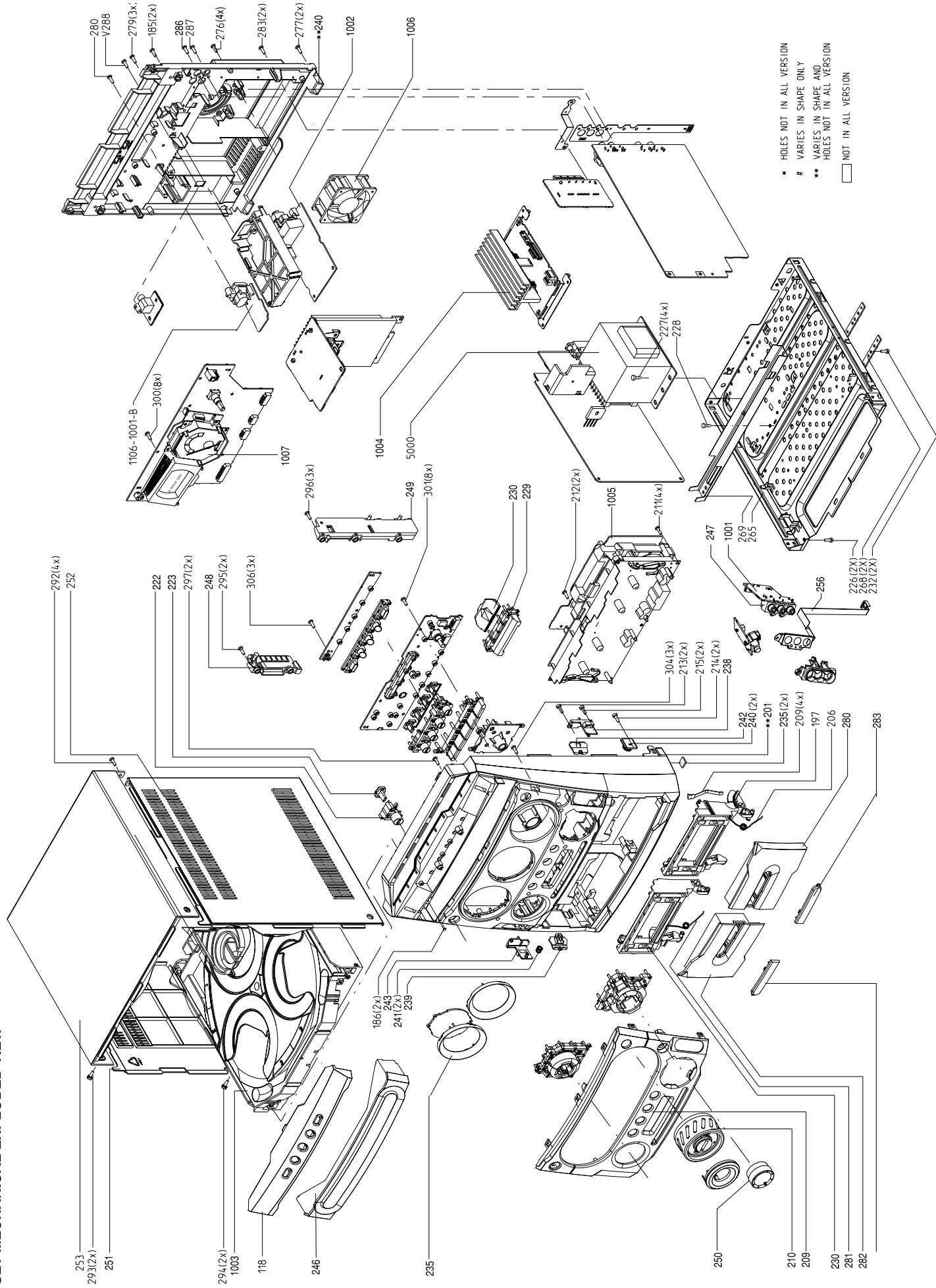


ELECTRICAL PARTSLIST - AF12 BOARD

-IC & TRANSISTORS -		
7201	5322 130 60159	BC846B
7204	5322 130 60159	BC846B
7402	5322 130 60159	BC846B
7621	5322 130 60159	BC846B
7623	5322 130 60159	BC846B
7636	5322 130 60159	BC846B
7682	5322 130 60159	BC846B
7803	5322 130 60159	BC846B
7203	4822 130 60373	BC856B
7622	4822 130 60373	BC856B
7635	4822 130 60373	BC856B
7681	4822 130 60373	BC856B
7603	4822 130 42804	BC817-25
7604	4822 130 42804	BC817-25
7401	4822 130 41246	BC327-25
7601	4822 209 31378	NJM4556MB
7403	4822 209 17345	M62320FP
7501	9322 150 74668	IC SM TDA7468D
7694	5322 209 11102	HEF4052BT
7695	4822 209 83357	NJM4560M

Note: Only these parts mentioned in the list are normal service parts.

SET MECHANICAL EXPLODED VIEW



MECHANICAL & ACCESSORIES PARTSLIST

201	3141 077 50001	CAB-FRONT PRE-ASSY /21
201	3140 117 72301	CAB-FRONT PRE-ASSY /22
210	3140 117 73021	KNOB VOLUME PRE ASSY
230	3140 117 73031	DOOR CASSETTE PRE ASSY
235	3140 117 73041	WINDOW PRE ASSY
240	3140 117 72311	PANEL REAR PRE-ASSY
246	3140 114 62861	COVER TRAY CDC FWM730
250	3140 114 62991	KNOB ROTARY FWM730
251	3139 114 79081	PANEL LEFT M2003
252	3139 114 79101	PANEL RIGHT M2003
253	3139 114 78341	COVER TOP MINI2003
298	3139 114 71012	STOPPER HEATSINK
330	3140 118 51931	BOX SPK ASSY
331	4822 320 11094	COAXIAL 300R
333	2422 549 45067	ANT AM LOOP
335	3139 238 06501	REMOTE CONTROL
337	△ 2422 070 98151	MAINS-CORD EUR 1M5 BK B
338	4822 263 21206	P50 ADAPTOR
240	4822 529 10322	DAMPER ASSY MODULE 0.8
1002	3103 308 64260	PBAS TUNER ECO6 AS/01 RDS /21
1002	3103 308 64251	PBAS TUNER ECO6 AS/02 RDS /22
1005	3139 118 77971	T/DECK BRICK ETF7-FERRO DD/FF
1006	2822 031 01494	FAN 12VDC 0.8W 3100RPM B
1007	3140 110 52141	METER VU FOR MINI404
1903	2422 129 15195	VOL-TSEL 2P 5A
5000	△ 3139 118 32831	TRAFO MAINS UCD 150W / 21
5000	△ 3139 118 32821	TRAFO MAINS UCD 150W / 22
8226	3139 110 35900	FFC FOIL 07P/220/07P AD
8228	3140 110 22501	FFC FOIL 8P/280/8P AD
8400	3139 110 34920	FFC FOIL 08P/280/08P BD
8401	3139 111 02491	FFC FOIL 19P/280/19P AD
8402	3140 110 22471	FFC FOIL 09P/280/09P AD
8404	3139 110 34610	FFC FOIL 11P/180/11P AD
8406	3140 110 22481	FFC FOIL 07P/180/07P BD
8500	3139 110 35210	FFC FOIL 06P/080/06P AD
8501	3139 110 33940	CWAS FFC BD04P 180
8503	3139 110 35880	FFC FOIL 15P/180/15P BD
8601	3139 110 34740	FFC FOIL 08P/180/08P AD
8602	4822 320 12752	FFC 7P - 180MM

Note: Only these parts mentioned in the list are normal service parts.

REVISION LIST

Version 1.0 (3140 785 32960)

* Initial Release FWM730/21/22

Version 1.1 (3140 785 32961)

* Page 8-2 : Power 303 Module (UCD 100-150W) - Update
- a Jumper Wiring in Section C2 added
- the track between pos.6717 and pos.6707 cut